

# CAMK2 antibody



Catalog Number: 108913

## Product name

CAMK2 antibody

IHC: 1:50-1:500

IF: 1:20-1:200

## Specificity

Human, Mouse, Rat; other species not tested.

## Antibody description

CAMK2 Rabbit Polyclonal antibody. Positive WB detected in HEK-293 cells. Positive IF detected in SH-SY5Y cells. Positive IHC detected in human renal cell carcinoma tissue. Observed molecular weight by Western-blot: 45 kDa

## Preparation

This antibody was obtained by immunization of CAMK2 recombinant protein (Accession Number: NM\_171825). Purification method: Antigen affinity purified.

## Formulation

PBS with 0.02% sodium azide and 50% glycerol pH 7.3.

## Storage

Store at -20°C. DO NOT ALIQUOT

## Clonality

Polyclonal

## Ig Type

Rabbit IgG

## Applications

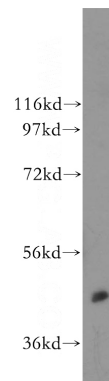
ELISA, WB, IF, IHC

## Dilutions

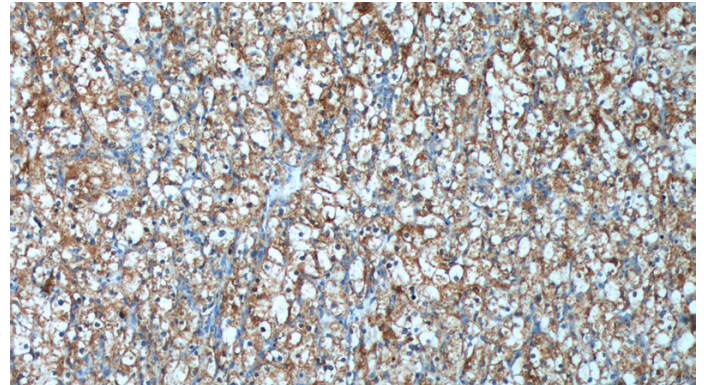
Recommended Dilution:

WB: 1:200-1:2000

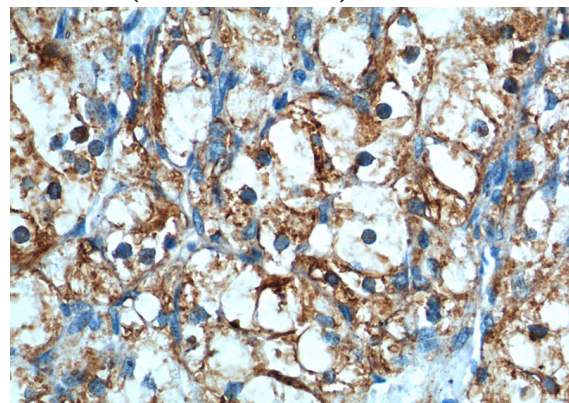
## Validations



HEK-293 cells were subjected to SDS PAGE followed by western blot with Catalog No:108913(CAMK2A antibody) at dilution of 1:400



Immunohistochemistry of paraffin-embedded human renal cell carcinoma tissue slide using Catalog No:108913(CAMK2A Antibody) at dilution of 1:200 (under 10x lens).



Immunohistochemistry of paraffin-embedded

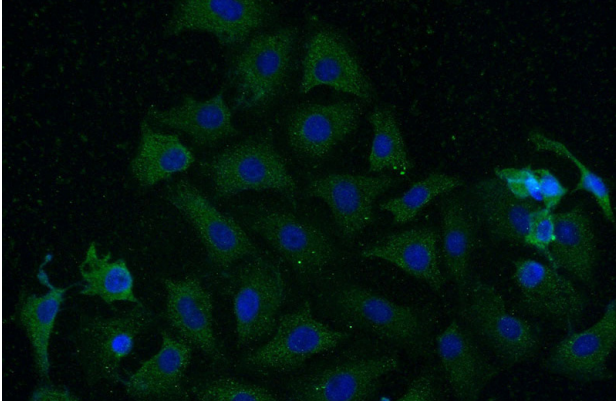
# CAMK2 antibody



Catalog Number: 108913

---

human renal cell carcinoma tissue slide using Catalog No:108913(CAMK2A Antibody) at dilution of 1:200 (under 40x lens).



Immunofluorescent analysis of (-20oc Ethanol) fixed SH-SY5Y cells using Catalog No:108913(CAMK2A Antibody) at dilution of 1:50 and Alexa Fluor 488-conjugated AffiniPure Goat Anti-Rabbit IgG(H+L)