

Calumenin antibody



Catalog Number: 108911

Product name

Calumenin antibody

Recommended Dilution:

WB: 1:200-1:2000

Specificity

Human, Mouse; other species not tested.

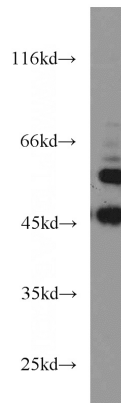
IHC: 1:20-1:200

IF: 1:50-1:500

Antibody description

Calumenin Rabbit Polyclonal antibody. Positive IF detected in HepG2 cells. Positive IHC detected in human placenta tissue, human brain tissue, human lung tissue, human ovary tissue, human skeletal muscle tissue, human spleen tissue. Positive WB detected in HEK-293 cells, HepG2 cells, human placenta tissue, K-562 cells, mouse kidney tissue. Observed molecular weight by Western-blot: 47 kDa, 57 kDa

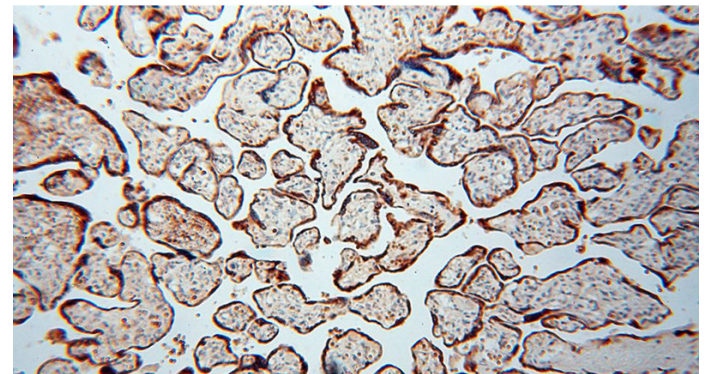
Validations



HEK-293 cells were subjected to SDS PAGE followed by western blot with Catalog No:108911(CALU antibody) at dilution of 1:800

Preparation

This antibody was obtained by immunization of Calumenin recombinant protein (Accession Number: NM_001219). Purification method: Antigen affinity purified.



Immunohistochemical of paraffin-embedded human placenta using Catalog No:108911(CALU antibody) at dilution of 1:50 (under 10x lens)

Formulation

PBS with 0.02% sodium azide and 50% glycerol pH 7.3.

Storage

Store at -20°C. DO NOT ALIQUOT

Clonality

Polyclonal

Ig Type

Rabbit IgG

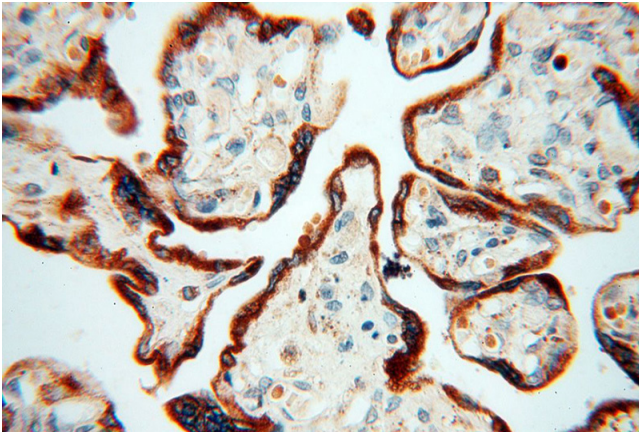
Applications

ELISA, WB, IHC, IF

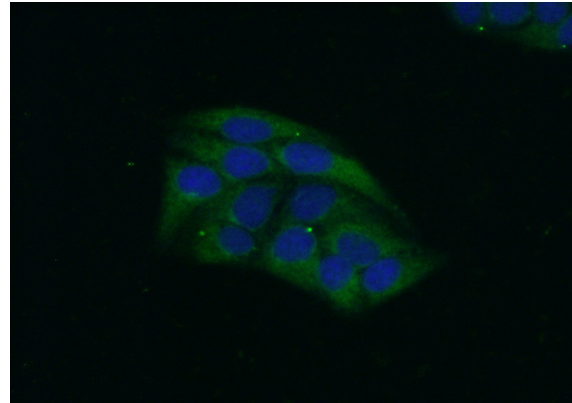
Dilutions

Calumenin antibody

Catalog Number: 108911



Immunohistochemical of paraffin-embedded human placenta using Catalog No:108911(CALU antibody) at dilution of 1:50 (under 40x lens)



Immunofluorescent analysis of (-20oc Ethanol) fixed HepG2 cells using Catalog No:108911(CALU Antibody) at dilution of 1:50 and Alexa Fluor 488-conjugated AffiniPure Goat Anti-Rabbit IgG(H+L)