

# Calsequestrin 2 antibody

Catalog Number: 108910

## Product name

Calsequestrin 2 antibody

WB: 1:1000-1:10000

IHC: 1:20-1:200

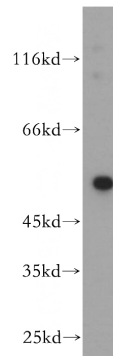
## Specificity

Human, Mouse, Rat; other species not tested.

## Validations

## Antibody description

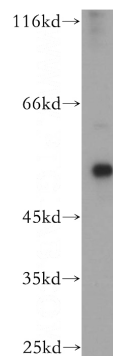
Calsequestrin 2 Rabbit Polyclonal antibody. Positive WB detected in human heart tissue, human skeletal muscle tissue. Positive IHC detected in human heart tissue, human kidney tissue, human ovary tissue, human placenta tissue, human skin tissue, human spleen tissue. Observed molecular weight by Western-blot: 55 kDa



## Preparation

This antibody was obtained by immunization of Calsequestrin 2 recombinant protein (Accession Number: NM\_001232). Purification method: Antigen affinity purified.

human heart tissue were subjected to SDS PAGE followed by western blot with Catalog No:108910(CASQ2 antibody) at dilution of 1:500



## Formulation

PBS with 0.02% sodium azide and 50% glycerol pH 7.3.

human skeletal muscle tissue were subjected to SDS PAGE followed by western blot with Catalog No:108910(CASQ2 antibody) at dilution of 1:500

## Storage

Store at -20°C. DO NOT ALIQUOT

## Clonality

Polyclonal

## Ig Type

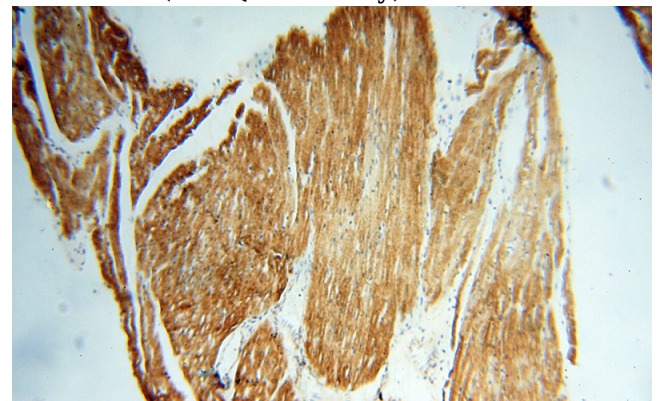
Rabbit IgG

## Applications

ELISA, WB, IHC

## Dilutions

Recommended Dilution:



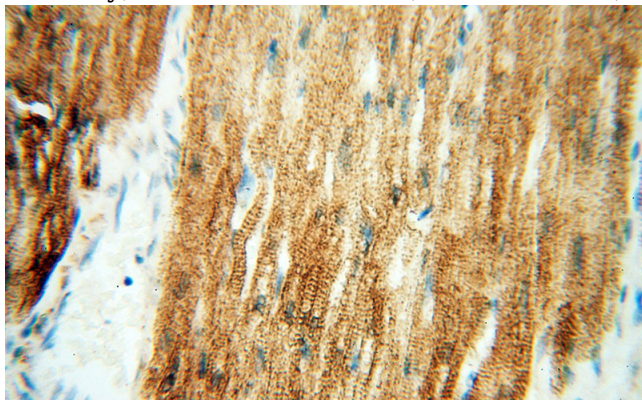
Immunohistochemical of paraffin-embedded human heart using Catalog No:108910(CASQ2

# Calsequestrin 2 antibody

Catalog Number: 108910

---

antibody) at dilution of 1:100 (under 10x lens)



Immunohistochemical of paraffin-embedded human heart using Catalog No:108910(CASQ2 antibody) at dilution of 1:100 (under 40x lens)