

# Calpastatin antibody

Catalog Number: 108904

## Product name

Calpastatin antibody

WB: 1:500-1:5000

IP: 1:500-1:5000

## Specificity

Human; other species not tested.

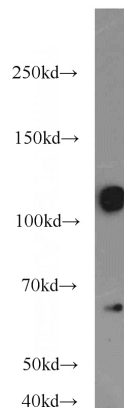
IHC: 1:20-1:200

IF: 1:10-1:100

## Antibody description

Calpastatin Rabbit Polyclonal antibody. Positive IHC detected in human breast cancer tissue, human colon cancer tissue, human skeletal muscle tissue. Positive IF detected in HeLa cells. Positive IP detected in K-562 cells. Positive WB detected in HeLa cells, K-562 cells, MCF7 cells. Observed molecular weight by Western-blot: 120 kDa

## Validations



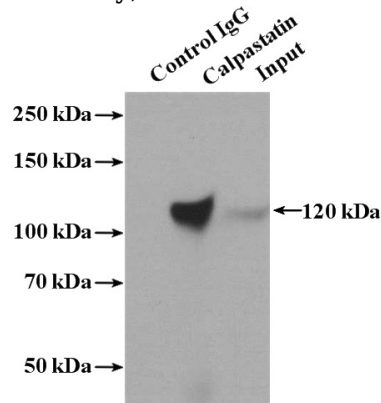
## Preparation

This antibody was obtained by immunization of Calpastatin recombinant protein (Accession Number: NM\_001042444). Purification method: Antigen affinity purified.

HeLa cells were subjected to SDS PAGE followed by western blot with Catalog No:108904(CAST antibody) at dilution of 1:1000

## Formulation

PBS with 0.1% sodium azide and 50% glycerol pH 7.3.



## Storage

Store at -20°C. DO NOT ALIQUOT

## Clonality

Polyclonal

## Ig Type

Rabbit IgG

## Applications

ELISA, IF, IHC, WB, IP

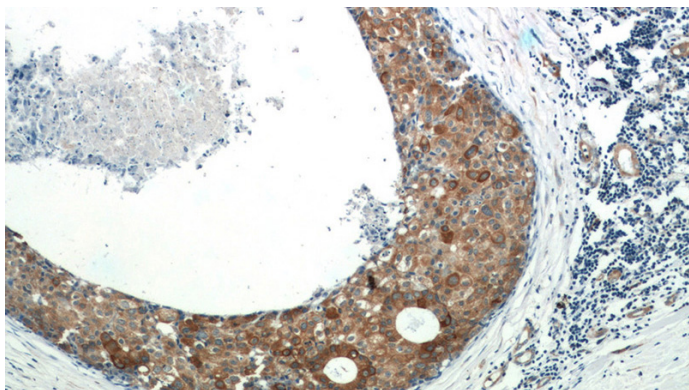
## Dilutions

Recommended Dilution:

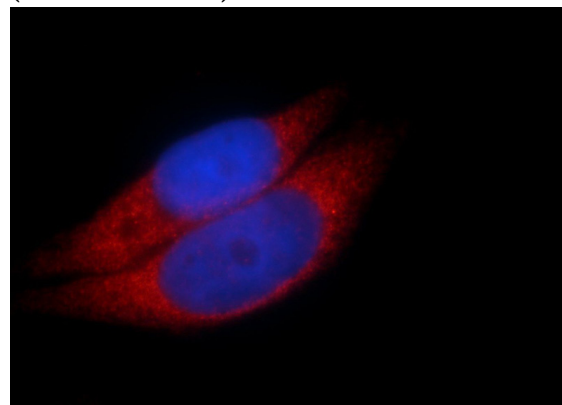
IP Result of anti-CAST (IP:Catalog No:108904, 4ug; Detection:Catalog No:108904 1:1000) with K-562 cells lysate 4000ug.

# Calpastatin antibody

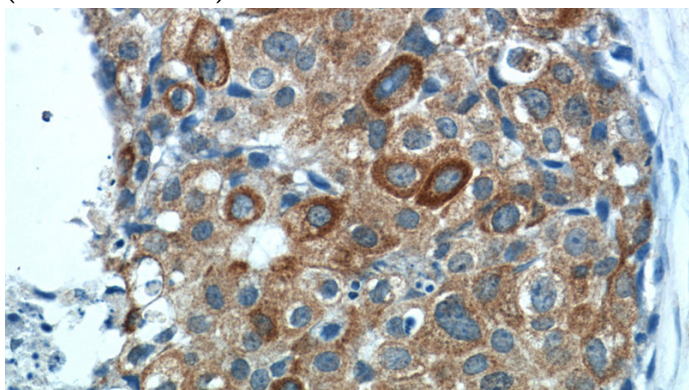
Catalog Number: 108904



Immunohistochemistry of paraffin-embedded human breast cancer tissue slide using Catalog No:108904(CAST Antibody) at dilution of 1:50 (under 40x lens)



Immunohistochemistry of paraffin-embedded human breast cancer tissue slide using Catalog No:108904(CAST Antibody) at dilution of 1:50 (under 10x lens)



Immunofluorescent analysis of HeLa cells using Catalog No:108904(CAST Antibody) at dilution of 1:25 and Rhodamine-Goat anti-Rabbit IgG