

# Cathepsin H antibody



Catalog Number: 108892

## Product name

Cathepsin H antibody

IHC: 1:20-1:200

IF: 1:20-1:200

## Specificity

Human, Mouse, Rat; other species not tested.

## Antibody description

Cathepsin H Rabbit Polyclonal antibody. Positive IHC detected in human lung cancer tissue. Positive IF detected in HepG2 cells. Positive WB detected in SH-SY5Y cells, HepG2 cells, human lung tissue. Observed molecular weight by Western-blot: 41 kDa

## Preparation

This antibody was obtained by immunization of Cathepsin H recombinant protein (Accession Number: NM\_004390). Purification method: Antigen affinity purified.

## Formulation

PBS with 0.1% sodium azide and 50% glycerol pH 7.3.

## Storage

Store at -20°C. DO NOT ALIQUOT

## Clonality

Polyclonal

## Ig Type

Rabbit IgG

## Applications

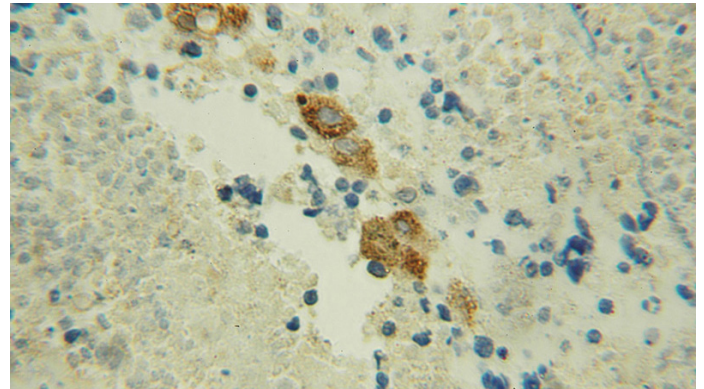
ELISA, IHC, WB, IF

## Dilutions

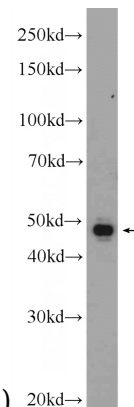
Recommended Dilution:

WB: 1:200-1:2000

## Validations

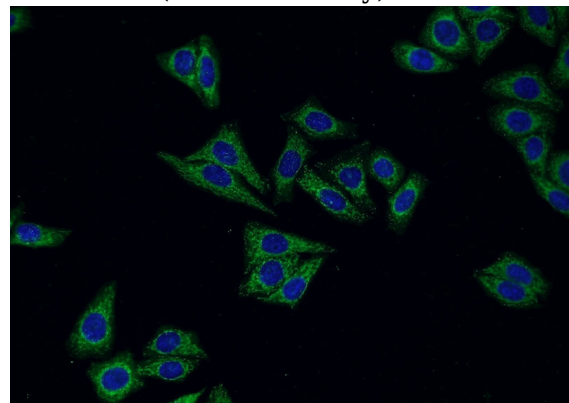


Immunohistochemical of paraffin-embedded human lung cancer using Catalog No:108892(CTSH antibody) at dilution of 1:50



(under 10x lens) 20kd→

SH-SY5Y cells were subjected to SDS PAGE followed by western blot with Catalog No:108892(CTSH Antibody) at dilution of 1:600



Immunofluorescent analysis of HepG2 cells using Catalog No:108892(CTSH Antibody) at dilution of

# Cathepsin H antibody



Catalog Number: 108892

---

1:50 and Alexa Fluor 488-conjugated AffiniPure

Goat Anti-Rabbit IgG(H+L)