

# Cathepsin F antibody

Catalog Number: 108890

## Product name

Cathepsin F antibody

## Specificity

Human, Mouse, Rat; other species not tested.

## Antibody description

Cathepsin F Rabbit Polyclonal antibody. Positive IHC detected in human prostate cancer tissue, human heart tissue, human stomach cancer tissue, mouse heart tissue, mouse liver tissue. Positive WB detected in Transfected HEK-293 cells.

## Preparation

This antibody was obtained by immunization of Cathepsin F recombinant protein (Accession Number: NM\_003793). Purification method: Antigen affinity purified.

## Formulation

PBS with 0.1% sodium azide and 50% glycerol pH 7.3.

## Storage

Store at -20°C. DO NOT ALIQUOT

## Clonality

Polyclonal

## Ig Type

Rabbit IgG

## Applications

ELISA, IHC, WB

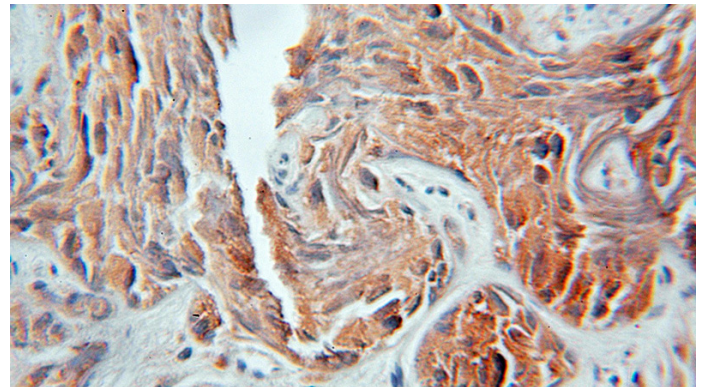
## Dilutions

Recommended Dilution:

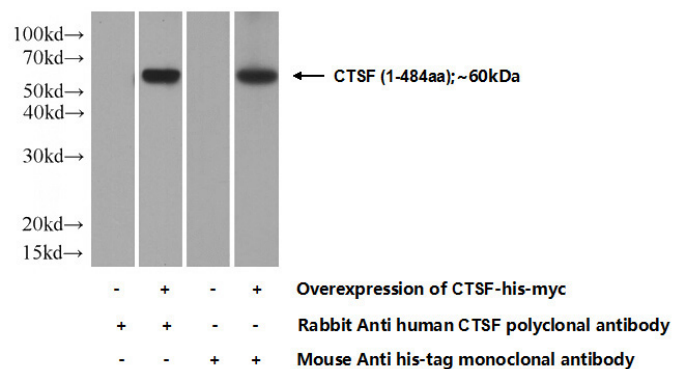
WB: 1:500-1:5000

IHC: 1:20-1:200

## Validations



Immunohistochemical of paraffin-embedded human prostate cancer using Catalog No:108890(CTSF antibody) at dilution of 1:100 (under 10x lens)



Transfected HEK-293 cells were subjected to SDS PAGE followed by western blot with Catalog No:108890(CTSE Antibody) at dilution of 1:1000