

Cathepsin B antibody



Catalog Number: 108887

Product name

Cathepsin B antibody

Recommended Dilution:

WB: 1:200-1:2000

Specificity

Human, Mouse; other species not tested.

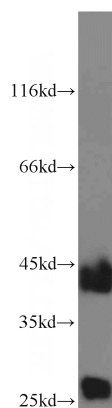
IHC: 1:20-1:200

IF: 1:10-1:100

Antibody description

Cathepsin B Rabbit Polyclonal antibody. Positive FC detected in MCF-7 cells. Positive IHC detected in human breast cancer tissue, human colon cancer tissue, human ovary tumor tissue. Positive IF detected in A375 cells. Positive WB detected in A375 cells, HT-1080 cells, human brain tissue, human liver tissue, mouse brain tissue, NIH/3T3 cells, RAW264.7 cells. Observed molecular weight by Western-blot: 38 kDa, 44 kDa

Validations



Preparation

This antibody was obtained by immunization of Cathepsin B recombinant protein (Accession Number: XM_011543812). Purification method: Antigen affinity purified.

A375 cells were subjected to SDS PAGE followed by western blot with Catalog No:108887(CTSB antibody) at dilution of 1:800

Formulation

PBS with 0.1% sodium azide and 50% glycerol pH 7.3.

Storage

Store at -20°C. DO NOT ALIQUOT

Clonality

Polyclonal

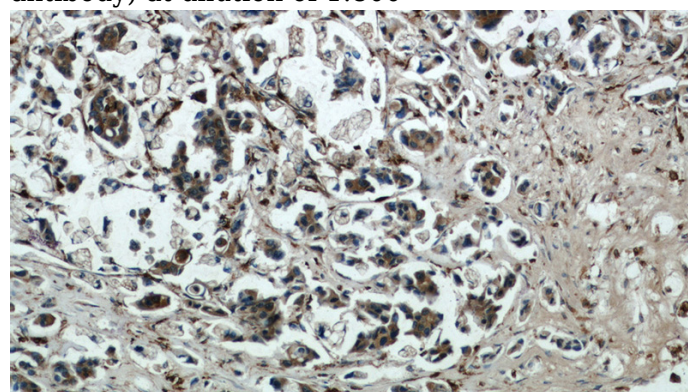
Ig Type

Rabbit IgG

Applications

ELISA, WB, IHC, IF, FC

Dilutions

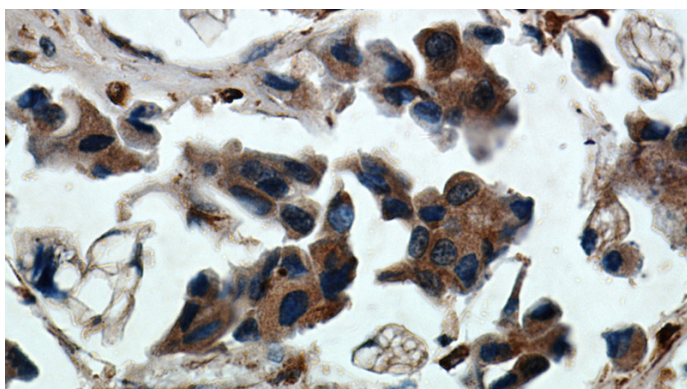


Immunohistochemical of paraffin-embedded human breast cancer using Catalog No:108887(CTSB antibody) at dilution of 1:50 (under 10x lens)

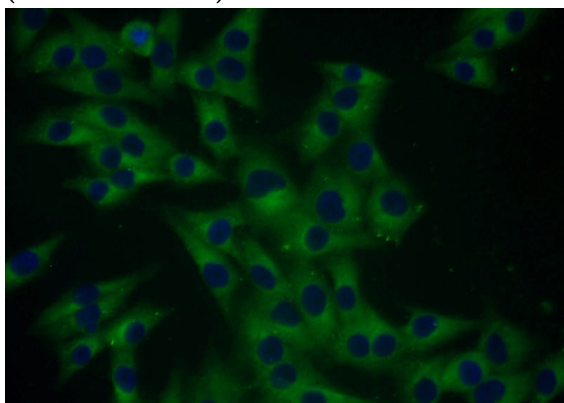
Cathepsin B antibody



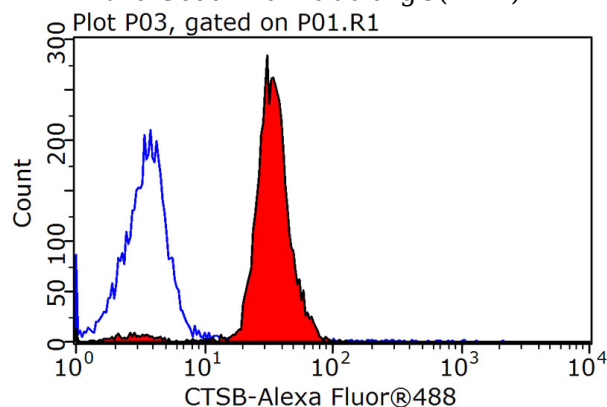
Catalog Number: 108887



Immunohistochemical of paraffin-embedded human breast cancer using Catalog No:108887(CTSB antibody) at dilution of 1:50 (under 40x lens)



Immunofluorescent analysis of A375 cells using Catalog No:108887(Cathepsin B Antibody) at dilution of 1:25 and Alexa Fluor 488-conjugated AffiniPure Goat Anti-Rabbit IgG(H+L)



1X10⁶ MCF-7 cells were stained with 0.2ug Cathepsin B antibody (Catalog No:108887, red) and control antibody (blue). Fixed with 90% MeOH blocked with 3% BSA (30 min). Alexa Fluor 488-conjugated AffiniPure Goat Anti-Rabbit IgG(H+L) with dilution 1:1500.