

# Catalase antibody

Catalog Number: 108884

## Product name

Catalase antibody

WB: 1:500-1:5000

IHC: 1:20-1:200

## Specificity

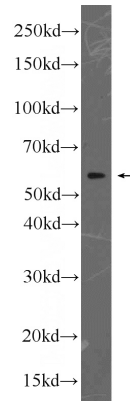
Human, Mouse, Rat; other species not tested.

IF: 1:10-1:100

## Antibody description

Catalase Rabbit Polyclonal antibody. Positive WB detected in HeLa cells, HepG2 cells, HT-1080 cells, Jurkat cells, mouse liver tissue, Raji cells, rat liver tissue. Positive IF detected in HepG2 cells. Positive IHC detected in human hepat°Cirrhosis tissue. Observed molecular weight by Western-blot: 55-60kd

## Validations



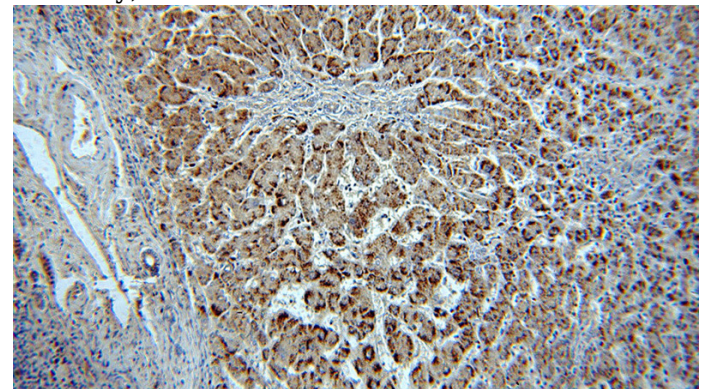
## Preparation

This antibody was obtained by immunization of Catalase recombinant protein (Accession Number: NM\_001752). Purification method: Antigen affinity purified.

HeLa cells were subjected to SDS PAGE followed by western blot with Catalog No:108884(CAT antibody) at dilution of 1:1000

## Formulation

PBS with 0.02% sodium azide and 50% glycerol pH 7.3.



## Storage

Store at -20°C. DO NOT ALIQUOT

## Clonality

Polyclonal

Immunohistochemical of paraffin-embedded human hepatocirrhosis using Catalog No:108884(CAT antibody) at dilution of 1:100 (under 10x lens)

## Ig Type

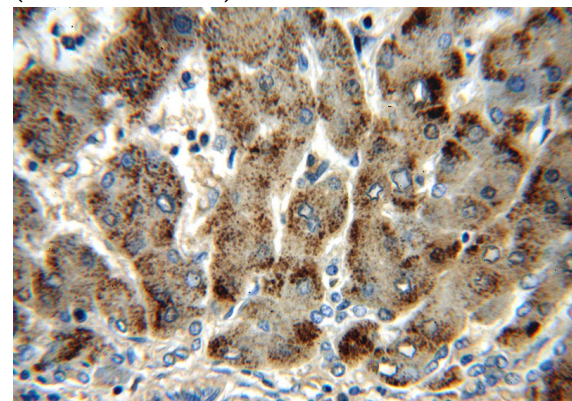
Rabbit IgG

## Applications

ELISA, IHC, WB, IF

## Dilutions

Recommended Dilution:

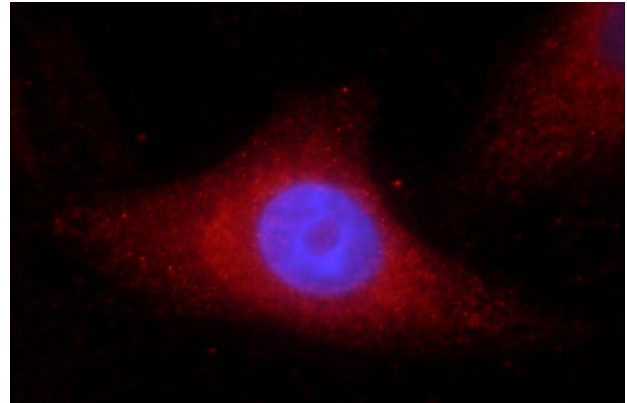


# Catalase antibody

Catalog Number: 108884

---

Immunohistochemical of paraffin-embedded human hepatocirrhosis using Catalog No:108884(CAT antibody) at dilution of 1:100 (under 40x lens)



Immunofluorescent analysis of HepG2 cells using Catalog No:108884(Catalase Antibody) at dilution of 1:25 and Rhodamine-Goat anti-Rabbit IgG