

Caspase 3/p17 antibody



Catalog Number: 108876

Product name

Caspase 3/p17 antibody

IP: 1:200-1:2000

IHC: 1:20-1:200

Specificity

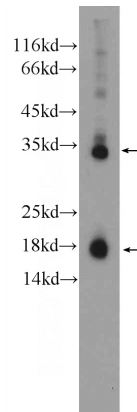
Human, Mouse, Rat; other species not tested.

IF: 1:20-1:200

Antibody description

Caspase 3/p17 Rabbit Polyclonal antibody. Positive WB detected in Jurkat cells, HeLa cells, mouse spleen tissue. Positive IP detected in NIH/3T3 cells. Positive IF detected in NIH/3T3 cells. Positive IHC detected in human kidney tissue, human spleen tissue. Observed molecular weight by Western-blot: 32-35 kDa

Validations



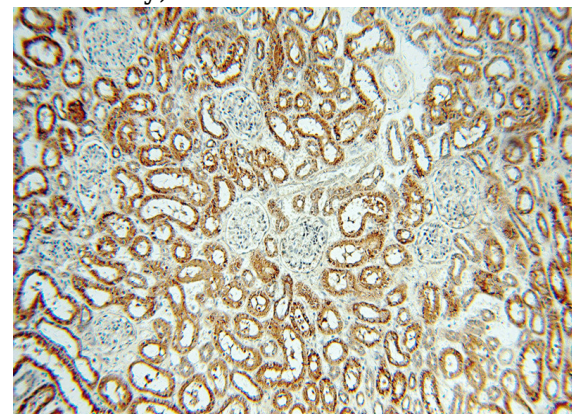
Preparation

This antibody was obtained by immunization of Peptide (Accession Number: NM_004346). Purification method: Antigen affinity purified.

Jurkat cells were subjected to SDS PAGE followed by western blot with Catalog No:108876(Caspase 3 Antibody) at dilution of 1:600

Formulation

PBS with 0.02% sodium azide and 50% glycerol pH 7.3.



Storage

Store at -20°C. DO NOT ALIQUOT

Clonality

Polyclonal

Ig Type

Rabbit IgG

Applications

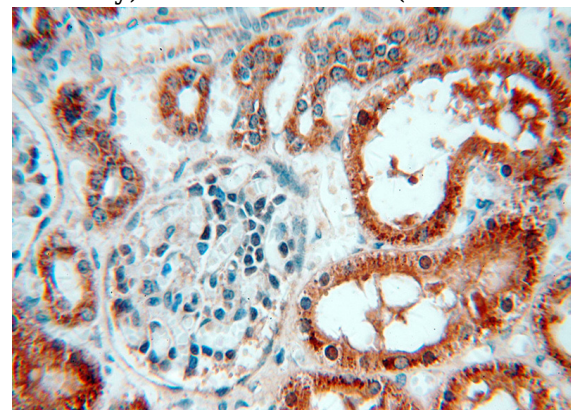
ELISA, IHC, WB, IF, IP

Dilutions

Recommended Dilution:

WB: 1:200-1:2000

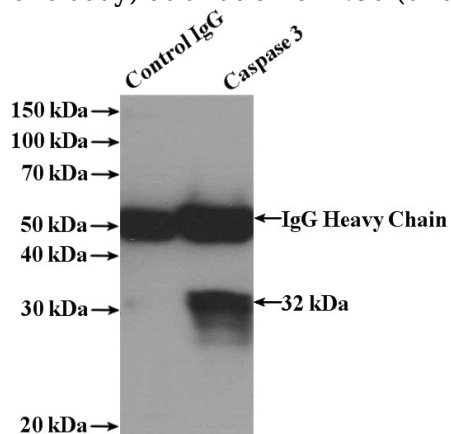
Immunohistochemical of paraffin-embedded human kidney using Catalog No:108876(CASP3 antibody) at dilution of 1:50 (under 10x lens)



Caspase 3/p17 antibody

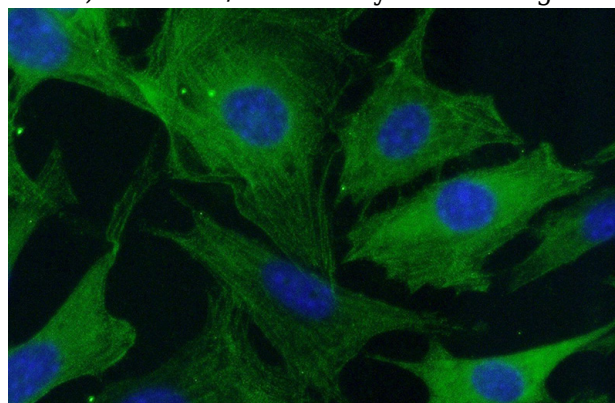
Catalog Number: 108876

Immunohistochemical of paraffin-embedded human kidney using Catalog No:108876(CASP3 antibody) at dilution of 1:50 (under 40x lens)



IP Result of anti-Caspase 3 (IP:Catalog No:108876, 4ug; Detection:Catalog No:108876)

1:500) with NIH/3T3 cells lysate 2000ug.



Immunofluorescent analysis of (-20oc Ethanol) fixed NIH/3T3 cells using Catalog No:108876(Caspase 3 Antibody) at dilution of 1:50 and Alexa Fluor 488-conjugated AffiniPure Goat Anti-Rabbit IgG(H+L)