

# Caspase 10/p23/17/p12 antibody



Catalog Number: 108871

## Product name

Caspase 10/p23/17/p12 antibody

WB: 1:200-1:2000

IP: 1:200-1:1000

## Specificity

Human; other species not tested.

IHC: 1:20-1:200

IF: 1:20-1:200

## Antibody description

Caspase 10/p23/17/p12 Rabbit Polyclonal antibody. Positive IP detected in HeLa cells. Positive WB detected in HeLa cells, Apoptosised HeLa cells. Positive IF detected in HepG2 cells. Positive IHC detected in human endometrial cancer tissue. Observed molecular weight by Western-blot: 59 kDa

## Preparation

This antibody was obtained by immunization of Caspase 10/p23/17/p12 recombinant protein (Accession Number: NM\_032977). Purification method: Antigen affinity purified.

## Formulation

PBS with 0.02% sodium azide and 50% glycerol pH 7.3.

## Storage

Store at -20°C. DO NOT ALIQUOT

## Clonality

Polyclonal

## Ig Type

Rabbit IgG

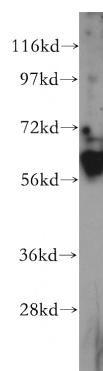
## Applications

ELISA, WB, IHC, IF, IP

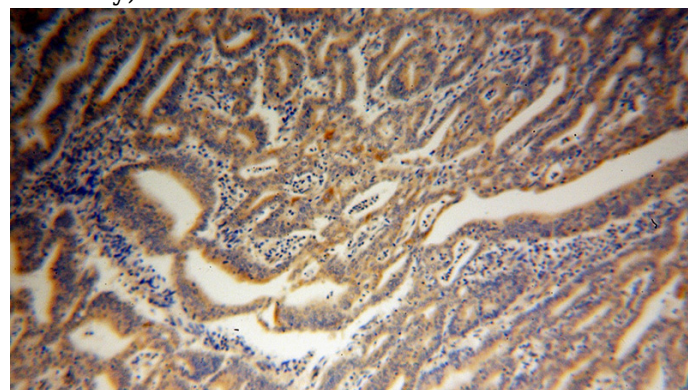
## Dilutions

Recommended Dilution:

## Validations



HeLa cells were subjected to SDS PAGE followed by western blot with Catalog No:108871(CASP10 antibody) at dilution of 1:300

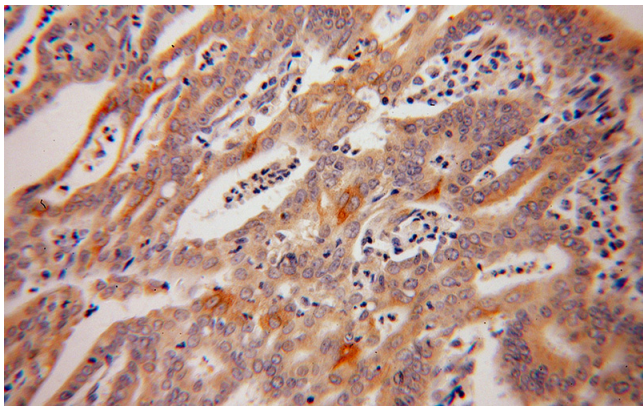


Immunohistochemical of paraffin-embedded human endometrial cancer using Catalog No:108871(CASP10 antibody) at dilution of 1:100 (under 10x lens)

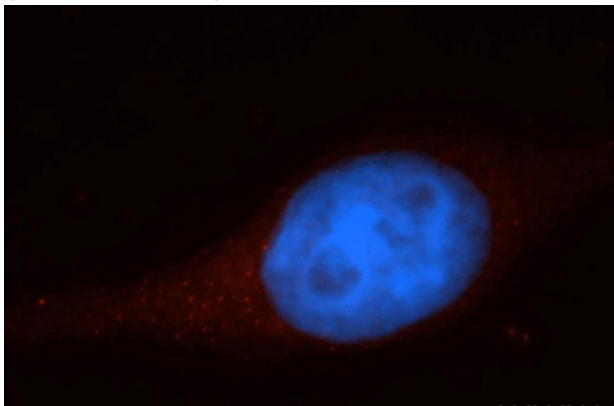
# Caspase 10/p23/17/p12 antibody



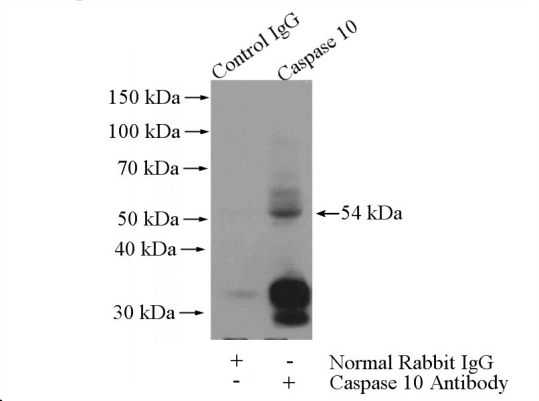
Catalog Number: 108871



Immunohistochemical of paraffin-embedded human endometrial cancer using Catalog No:108871(CASP10 antibody) at dilution of 1:100 (under 40x lens)



Immunofluorescent analysis of HepG2 cells, using CASP10 antibody Catalog No:108871 at 1:50 dilution and Rhodamine-labeled goat anti-rabbit IgG (red). Blue pseudocolor = DAPI (fluorescent



DNA dye).

IP Result of anti-Caspase 10 (IP:Catalog No:108871, 4ug; Detection:Catalog No:108871 1:300) with HeLa cells lysate 3200ug.