

# Casein Kinase 2 beta-specific antibody



Catalog Number: 108868

## Product name

Casein Kinase 2 beta-specific antibody

## Specificity

Human, Mouse, Rat; other species not tested.

## Antibody description

Casein Kinase 2 beta-specific Rabbit Polyclonal antibody. Positive WB detected in A431 cells. Positive IF detected in A431 cells. Observed molecular weight by Western-blot: 25 kDa

## Preparation

This antibody was obtained by immunization of Peptide (Accession Number: NM\_001320). Purification method: Antigen affinity purified.

## Formulation

PBS with 0.02% sodium azide and 50% glycerol pH 7.3.

## Storage

Store at -20°C. DO NOT ALIQUOT

## Clonality

Polyclonal

## Ig Type

Rabbit IgG

## Applications

ELISA, WB, IF

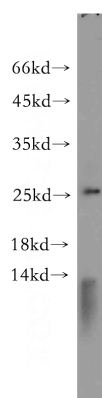
## Dilutions

Recommended Dilution:

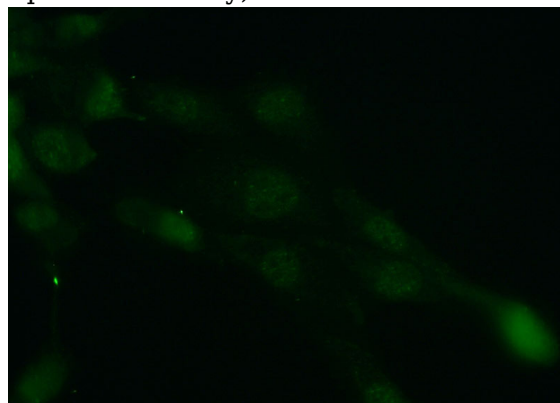
WB: 1:200-1:1000

IF: 1:50-1:500

## Validations



A431 cells were subjected to SDS PAGE followed by western blot with Catalog No:108868(CSNK2B-Specific antibody) at dilution of 1:100



Immunofluorescent analysis of (10% Formaldehyde) fixed A431 cells using Catalog No:108868(CSNK2B-Specific Antibody) at dilution of 1:50 and Alexa Fluor 488-conjugated AffiniPure Goat Anti-Rabbit IgG(H+L)