

# Casein Kinase 2 beta antibody



Catalog Number: 108867

## Product name

Casein Kinase 2 beta antibody

WB: 1:500-1:5000

IHC: 1:20-1:200

## Specificity

Human, Mouse, Rat; other species not tested.

## Antibody description

Casein Kinase 2 beta Rabbit Polyclonal antibody. Positive IHC detected in human testis tissue, human breast cancer tissue, mouse testis tissue. Positive FC detected in HeLa cells. Positive WB detected in MCF-7 cells, HeLa cells, HepG2 cells, NIH/3T3 cells. Observed molecular weight by Western-blot: 25-30 kDa

## Preparation

This antibody was obtained by immunization of Casein Kinase 2 beta recombinant protein (Accession Number: NM\_001320). Purification method: Antigen affinity purified.

## Formulation

PBS with 0.02% sodium azide and 50% glycerol pH 7.3.

## Storage

Store at -20°C. DO NOT ALIQUOT

## Clonality

Polyclonal

## Ig Type

Rabbit IgG

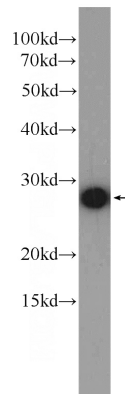
## Applications

ELISA, WB, IHC, FC

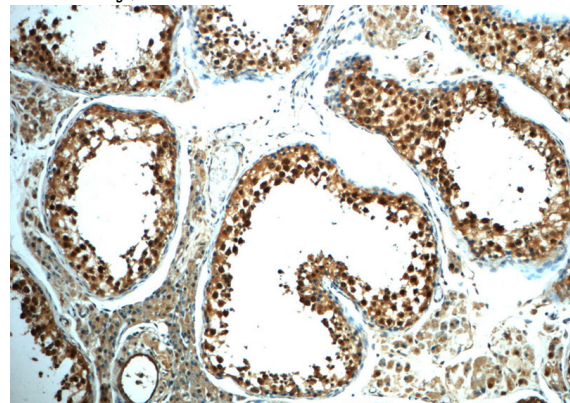
## Dilutions

Recommended Dilution:

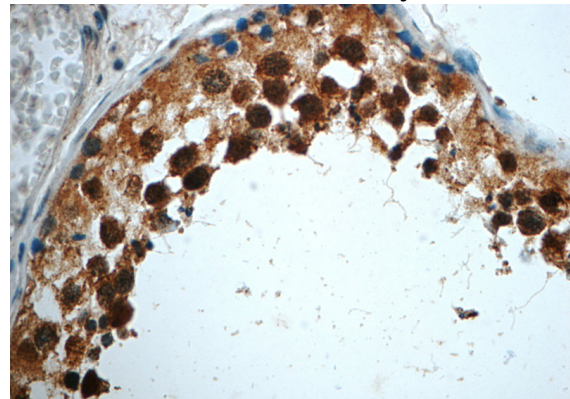
## Validations



MCF-7 cells were subjected to SDS PAGE followed by western blot with Catalog No:108867(CSNK2B Antibody) at dilution of 1:1000



Immunohistochemistry of paraffin-embedded human testis slide using Catalog No:108867(CSNK2B Antibody) at dilution of 1:50



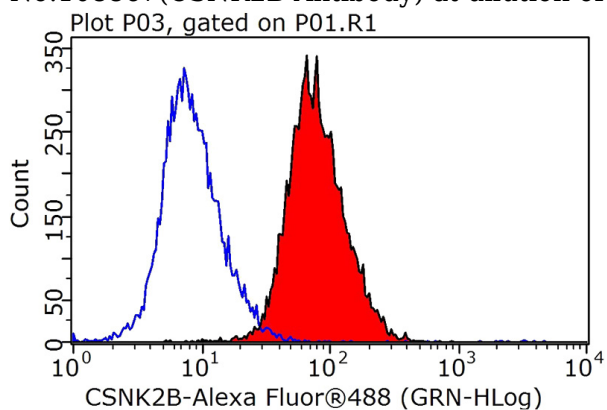
Immunohistochemistry of paraffin-embedded human testis slide using Catalog

# Casein Kinase 2 beta antibody



Catalog Number: 108867

No:108867(CSNK2B Antibody) at dilution of 1:50



1X10<sup>6</sup> HeLa cells were stained with 0.2ug CSNK2B antibody (Catalog No:108867, red) and control antibody (blue). Fixed with 90% MeOH blocked with 3% BSA (30 min). Alexa Fluor 488-conjugated AffiniPure Goat Anti-Rabbit IgG(H+L) with dilution 1:1000.