

# Casein Kinase 1 epsilon antibody



Catalog Number: 108866

## Product name

Casein Kinase 1 epsilon antibody

## Specificity

Human, Mouse, Rat; other species not tested.

## Antibody description

Casein Kinase 1 epsilon Rabbit Polyclonal antibody. Positive IHC detected in human breast cancer tissue, human heart tissue, human kidney tissue, human ovary tissue, human testis tissue.

## Preparation

This antibody was obtained by immunization of Casein Kinase 1 epsilon recombinant protein (Accession Number: NM\_152221). Purification method: Antigen affinity purified.

## Formulation

PBS with 0.1% sodium azide and 50% glycerol pH 7.3.

## Storage

Store at -20°C. DO NOT ALIQUOT

## Clonality

Polyclonal

## Ig Type

Rabbit IgG

## Applications

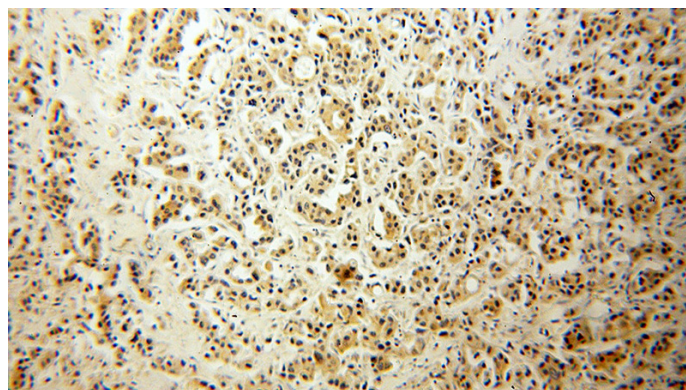
ELISA, IHC

## Dilutions

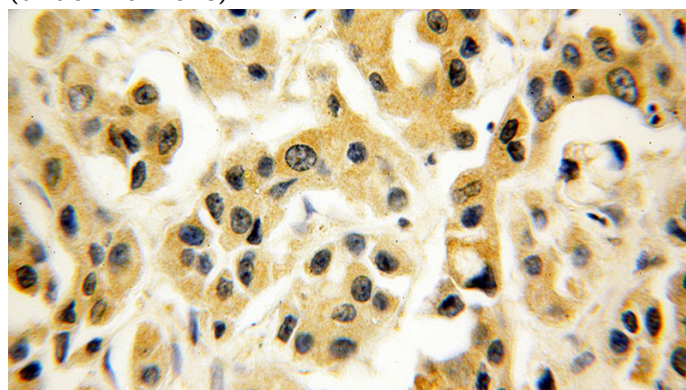
Recommended Dilution:

IHC: 1:20-1:200

## Validations



Immunohistochemical of paraffin-embedded human breast cancer using Catalog No:108866 (CSNK1E antibody) at dilution of 1:50 (under 10x lens)



Immunohistochemical of paraffin-embedded human breast cancer using Catalog No:108866 (CSNK1E antibody) at dilution of 1:50 (under 40x lens)