

# Casein Kinase 1 delta antibody



Catalog Number: 108865

## Product name

Casein Kinase 1 delta antibody

IP: 1:500-1:5000

IF: 1:20-1:200

## Specificity

Human, Mouse, Rat; other species not tested.

## Antibody description

Casein Kinase 1 delta Rabbit Polyclonal antibody. Positive WB detected in HeLa cells, HEK-293 cells, K-562 cells. Positive IP detected in HeLa cells. Positive IF detected in HepG2 cells. Observed molecular weight by Western-blot: 47kd

## Preparation

This antibody was obtained by immunization of Casein Kinase 1 delta recombinant protein (Accession Number: NM\_001893). Purification method: Antigen affinity purified.

## Formulation

PBS with 0.02% sodium azide and 50% glycerol pH 7.3.

## Storage

Store at -20°C. DO NOT ALIQUOT

## Clonality

Polyclonal

## Ig Type

Rabbit IgG

## Applications

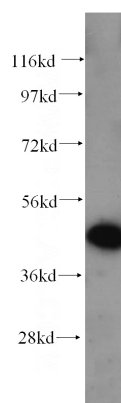
ELISA, WB, IF, IP

## Dilutions

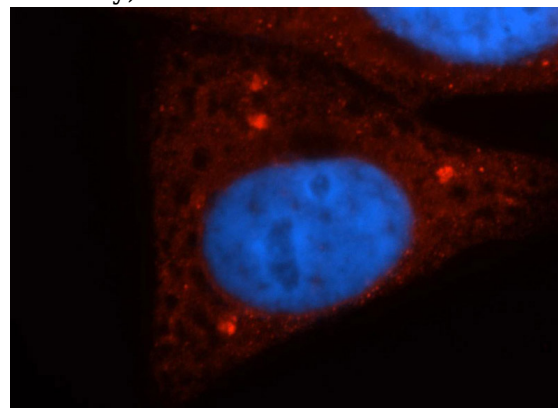
Recommended Dilution:

WB: 1:500-1:5000

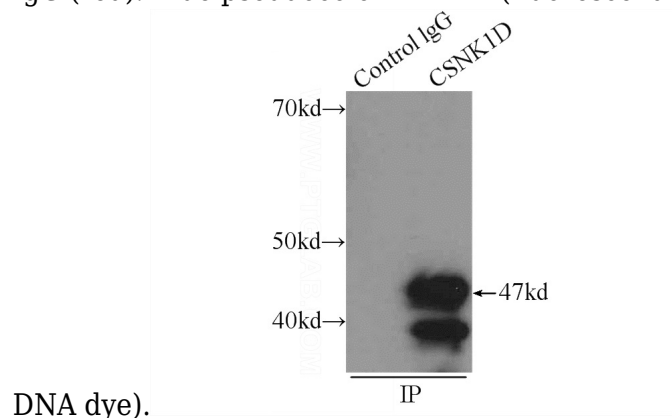
## Validations



HeLa cells were subjected to SDS PAGE followed by western blot with Catalog No:108865(CSNK1D antibody) at dilution of 1:600



Immunofluorescent analysis of HepG2 cells, using CSNK1D antibody Catalog No:108865 at 1:50 dilution and Rhodamine-labeled goat anti-rabbit IgG (red). Blue pseudocolor = DAPI (fluorescent



# Casein Kinase 1 delta antibody



Catalog Number: 108865

---

IP Result of anti-CSNK1D (IP:Catalog No:108865, 3ug; Detection:Catalog No:108865 1:1000) with HeLa cells lysate 2000ug.