

Product name

CARD8 antibody

Specificity

Human; other species not tested.

Antibody description

CARD8 Rabbit Polyclonal antibody. Positive IHC detected in human ovary tumor tissue. Positive IF detected in HepG2 cells.

Preparation

This antibody was obtained by immunization of CARD8 recombinant protein (Accession Number: XM_017026490). Purification method: Antigen affinity purified.

Formulation

PBS with 0.02% sodium azide and 50% glycerol pH 7.3.

Storage

Store at -20°C. DO NOT ALIQUOT

Clonality

Polyclonal

Ig Type

Rabbit IgG

Applications

ELISA, IHC, IF

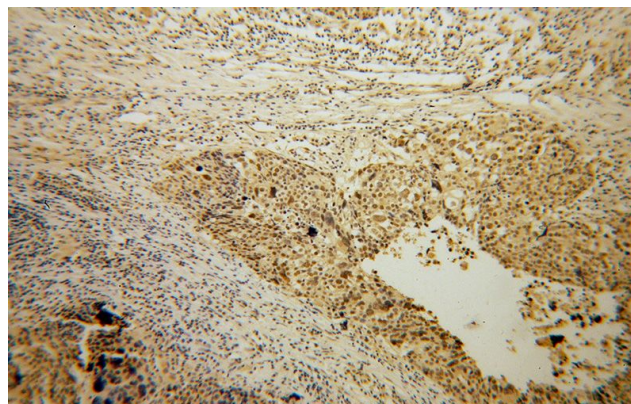
Dilutions

Recommended Dilution:

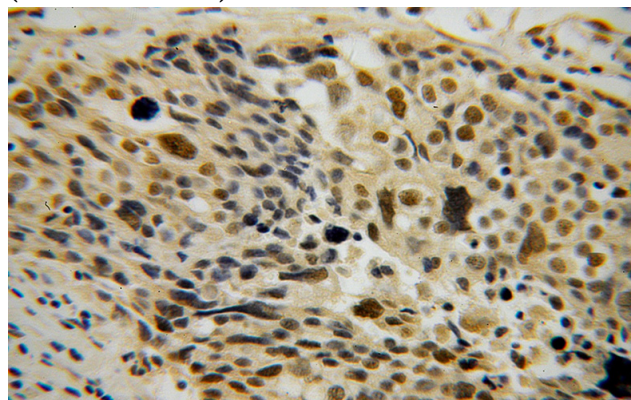
IHC: 1:20-1:200

IF: 1:20-1:200

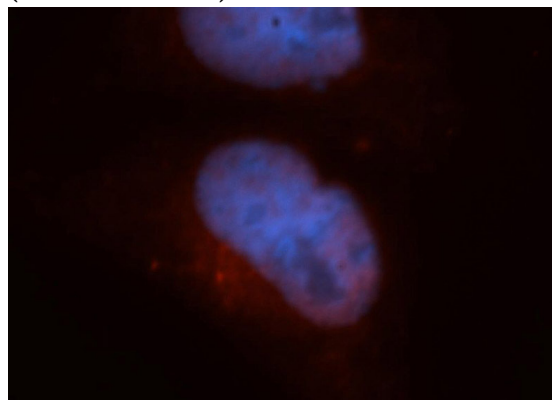
Validations



Immunohistochemical of paraffin-embedded human ovary tumor using Catalog No:108857(CARD8 antibody) at dilution of 1:50 (under 10x lens)



Immunohistochemical of paraffin-embedded human ovary tumor using Catalog No:108857(CARD8 antibody) at dilution of 1:50 (under 40x lens)



Immunofluorescent analysis of HepG2 cells, using CARD8 antibody Catalog No:108857 at 1:50 dilution and Rhodamine-labeled goat anti-rabbit

CARD8 antibody



Catalog Number: 108857

IgG (red). Blue pseudocolor = DAPI (fluorescent DNA dye).