

CARD14 antibody

Catalog Number: 108855

Product name

CARD14 antibody

Specificity

Human, Mouse, Rat; other species not tested.

Antibody description

CARD14 Rabbit Polyclonal antibody. Positive IP detected in HeLa cells. Positive WB detected in HeLa cells. Observed molecular weight by Western-blot: 113-120 kDa

Preparation

This antibody was obtained by immunization of CARD14 recombinant protein (Accession Number: NM_001257970). Purification method: Antigen affinity purified.

Formulation

PBS with 0.1% sodium azide and 50% glycerol pH 7.3.

Storage

Store at -20°C. DO NOT ALIQUOT

Clonality

Polyclonal

Ig Type

Rabbit IgG

Applications

ELISA, WB, IP

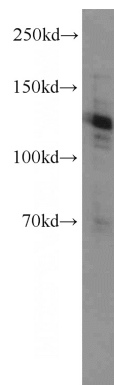
Dilutions

Recommended Dilution:

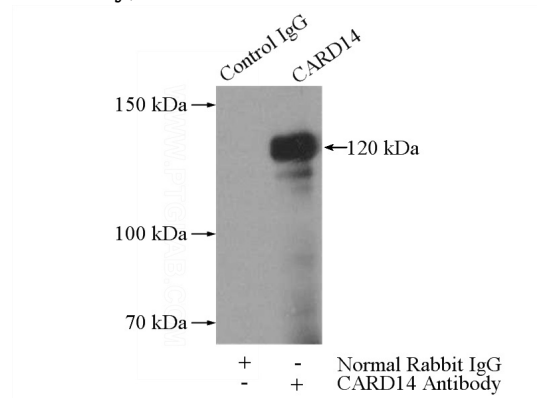
WB: 1:200-1:2000

IP: 1:200-1:1000

Validations



HeLa cells were subjected to SDS PAGE followed by western blot with Catalog No:108855(CARD14 antibody) at dilution of 1:500



IP Result of anti-CARD14 (IP:Catalog No:108855, 4ug; Detection:Catalog No:108855 1:300) with HeLa cells lysate 2440ug.