

# CARD11 antibody



Catalog Number: 108854

## Product name

CARD11 antibody

IHC: 1:20-1:200

IF: 1:10-1:100

## Specificity

Human, Mouse, Rat; other species not tested.

## Antibody description

CARD11 Rabbit Polyclonal antibody. Positive IF detected in L02 cells. Positive IHC detected in human lymphoma tissue, human colon cancer tissue. Positive WB detected in L02 cells. Observed molecular weight by Western-blot: 133 kDa

## Preparation

This antibody was obtained by immunization of CARD11 recombinant protein (Accession Number: NM\_001324281). Purification method: Antigen affinity purified.

## Formulation

PBS with 0.1% sodium azide and 50% glycerol pH 7.3.

## Storage

Store at -20°C. DO NOT ALIQUOT

## Clonality

Polyclonal

## Ig Type

Rabbit IgG

## Applications

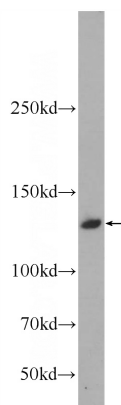
ELISA, WB, IF, IHC

## Dilutions

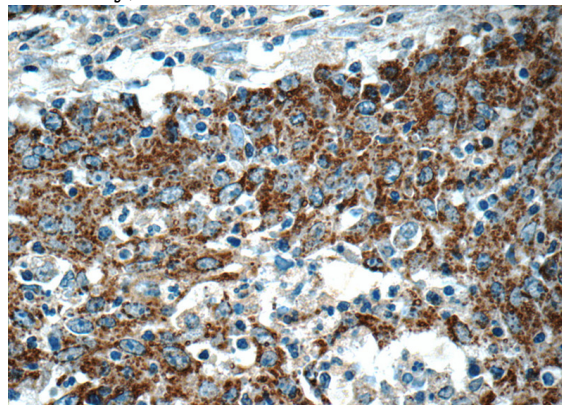
Recommended Dilution:

WB: 1:200-1:2000

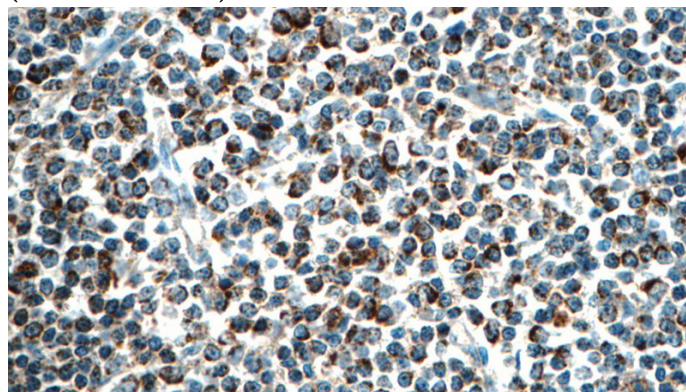
## Validations



L02 cells were subjected to SDS PAGE followed by western blot with Catalog No:108854(CARD11 Antibody) at dilution of 1:500



Immunohistochemistry of paraffin-embedded human colon cancer tissue slide using Catalog No:108854(CARD11 Antibody) at dilution of 1:50 (under 40x lens)



Immunohistochemistry of paraffin-embedded

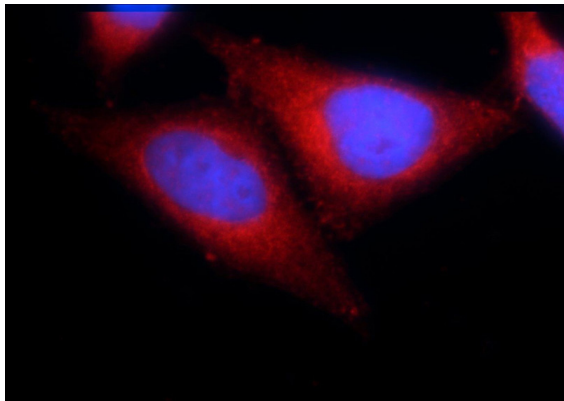
# CARD11 antibody



Catalog Number: 108854

---

human lymphoma tissue slide using Catalog No:108854(CARD11 Antibody) at dilution of 1:50 (under 40x lens)



Immunofluorescent analysis of L02 cells using Catalog No:108854(CARD11 Antibody) at dilution of 1:25 and Rhodamine-Goat anti-Rabbit IgG