

Carboxypeptidase E antibody



Catalog Number: 108852

Product name

Carboxypeptidase E antibody

WB: 1:200-1:2000

IP: 1:200-1:2000

Specificity

Human, Mouse, Rat; other species not tested.

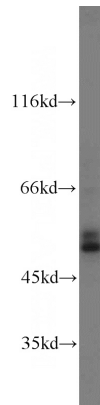
IHC: 1:20-1:200

IF: 1:50-1:500

Antibody description

Carboxypeptidase E Rabbit Polyclonal antibody. Positive WB detected in mouse brain tissue, human brain tissue, rat brain tissue. Positive IP detected in mouse brain tissue. Positive IF detected in SH-SY5Y cells. Positive IHC detected in human pituitary tissue. Observed molecular weight by Western-blot: 50kDa, 52 kDa

Validations



Preparation

This antibody was obtained by immunization of Carboxypeptidase E recombinant protein (Accession Number: NM_001873). Purification method: Antigen affinity purified.

mouse brain tissue were subjected to SDS PAGE followed by western blot with Catalog No:108852(CPE antibody) at dilution of 1:600

Formulation

PBS with 0.02% sodium azide and 50% glycerol pH 7.3.

Storage

Store at -20°C. DO NOT ALIQUOT

Clonality

Polyclonal

Ig Type

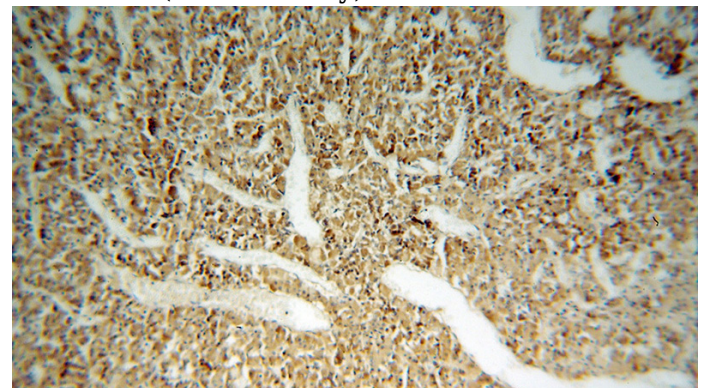
Rabbit IgG

Applications

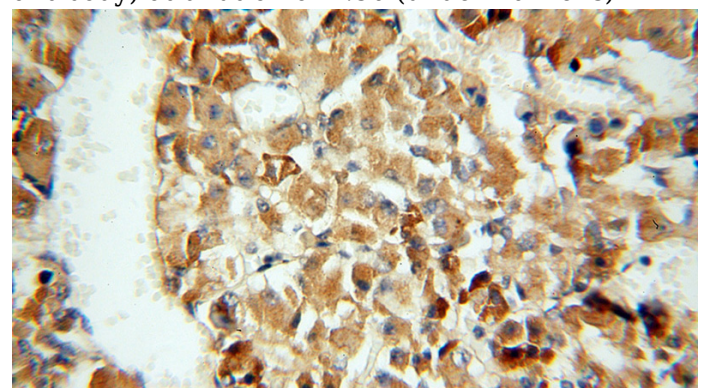
ELISA, WB, IHC, IP, IF

Dilutions

Recommended Dilution:



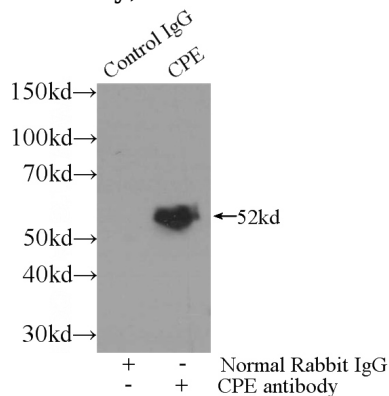
Immunohistochemical of paraffin-embedded human pituitary using Catalog No:108852(CPE antibody) at dilution of 1:50 (under 10x lens)



Carboxypeptidase E antibody

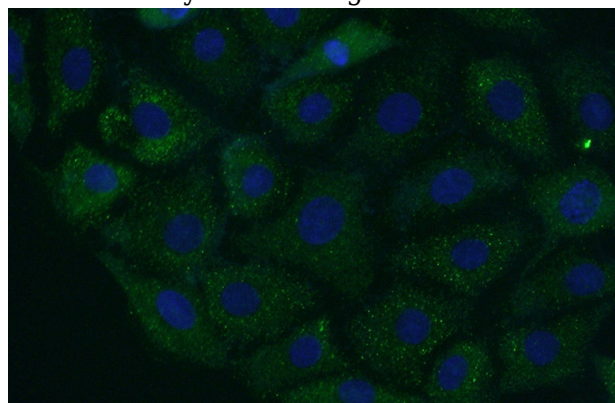
Catalog Number: 108852

Immunohistochemical of paraffin-embedded human pituitary using Catalog No:108852(CPE antibody) at dilution of 1:50 (under 40x lens)



IP Result of anti-CPE (IP:Catalog No:108852, 3ug; Detection:Catalog No:108852 1:500) with mouse

brain tissue lysate 3500ug.



Immunofluorescent analysis of (-20oc Acetone) fixed SH-SY5Y cells using Catalog No:108852(CPE Antibody) at dilution of 1:50 and Alexa Fluor 488-conjugated AffiniPure Goat Anti-Rabbit IgG(H+L)