

# Carboxypeptidase A1 antibody



Catalog Number: 108847

## Product name

Carboxypeptidase A1 antibody

## Specificity

Human, Mouse, Rat; other species not tested.

## Antibody description

Carboxypeptidase A1 Rabbit Polyclonal antibody. Positive WB detected in mouse pancreas tissue. Positive IHC detected in human placenta tissue, human kidney tissue, human liver tissue, human lung tissue, human spleen tissue. Observed molecular weight by Western-blot: 47 kDa

## Preparation

This antibody was obtained by immunization of Carboxypeptidase A1 recombinant protein (Accession Number: NM\_001868). Purification method: Antigen affinity purified.

## Formulation

PBS with 0.02% sodium azide and 50% glycerol pH 7.3.

## Storage

Store at -20°C. DO NOT ALIQUOT

## Clonality

Polyclonal

## Ig Type

Rabbit IgG

## Applications

ELISA, WB, IHC

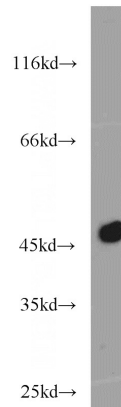
## Dilutions

Recommended Dilution:

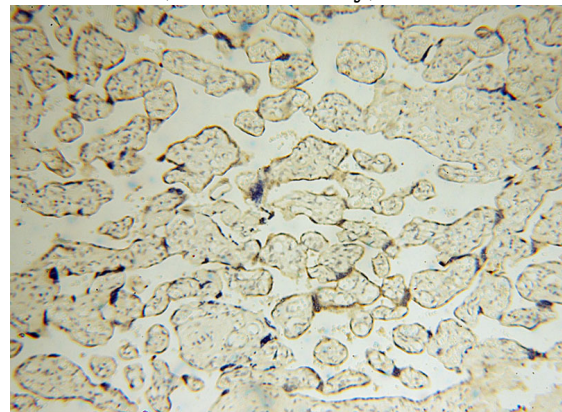
WB: 1:500-1:5000

IHC: 1:20-1:200

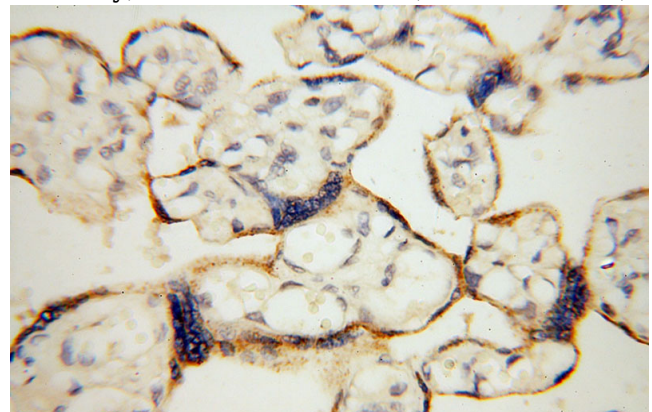
## Validations



mouse pancreas tissue were subjected to SDS PAGE followed by western blot with Catalog No:108847(CPA1 antibody) at dilution of 1:3000



Immunohistochemical of paraffin-embedded human placenta using Catalog No:108847(CPA1 antibody) at dilution of 1:100 (under 10x lens)



Immunohistochemical of paraffin-embedded human placenta using Catalog No:108847(CPA1 antibody) at dilution of 1:100 (under 40x lens)