

# CALN1 antibody

Catalog Number: 108831

## Product name

CALN1 antibody

IP: 1:200-1:1000

IHC: 1:20-1:200

## Specificity

Human, Mouse, Rat; other species not tested.

## Antibody description

CALN1 Rabbit Polyclonal antibody. Positive WB detected in rat brain tissue, human brain tissue, mouse brain tissue. Positive IP detected in rat brain tissue. Positive IHC detected in human prostate cancer tissue. Observed molecular weight by Western-blot: 25 kDa

## Preparation

This antibody was obtained by immunization of CALN1 recombinant protein (Accession Number: NM\_001017440). Purification method: Antigen affinity purified.

## Formulation

PBS with 0.1% sodium azide and 50% glycerol pH 7.3.

## Storage

Store at -20°C. DO NOT ALIQUOT

## Clonality

Polyclonal

## Ig Type

Rabbit IgG

## Applications

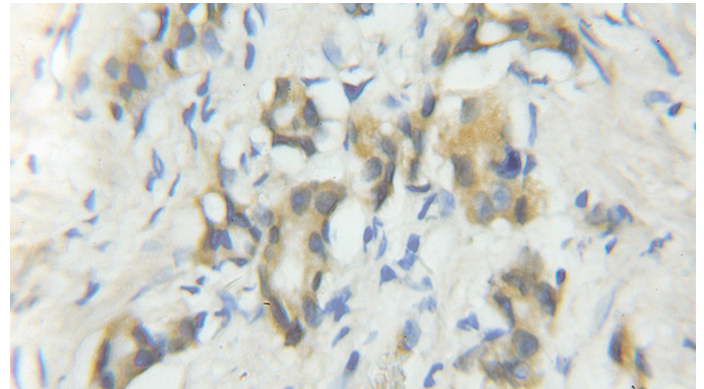
ELISA, IHC, WB, IP

## Dilutions

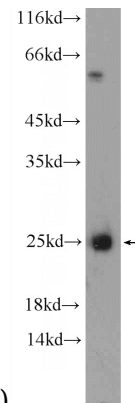
Recommended Dilution:

WB: 1:200-1:1000

## Validations

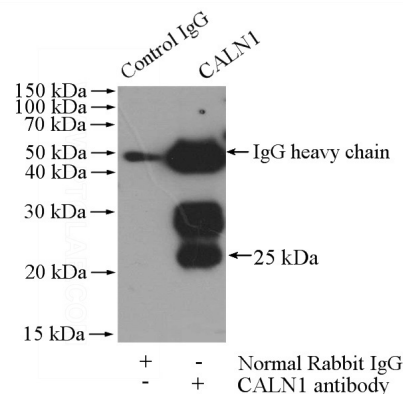


Immunohistochemical of paraffin-embedded human prostate cancer using Catalog No:108831(CALN1 antibody) at dilution of 1:100



(under 10x lens)

rat brain tissue were subjected to SDS PAGE followed by western blot with Catalog No:108831(CALN1 Antibody) at dilution of 1:300



IP Result of anti-CALN1 (IP:Catalog No:108831, 4ug; Detection:Catalog No:108831 1:300) with rat

# CALN1 antibody



Catalog Number: 108831

---

brain tissue lysate 4000ug.