

Calmodulin antibody



Catalog Number: 108830

Product name

Calmodulin antibody

Specificity

Human, Mouse; other species not tested.

Antibody description

Calmodulin Rabbit Polyclonal antibody. Positive IHC detected in human hepatocirrhosis tissue. Positive WB detected in mouse skeletal muscle tissue. Observed molecular weight by Western-blot: 17 kDa

Preparation

This antibody was obtained by immunization of Calmodulin recombinant protein (Accession Number: NM_001329922). Purification method: Antigen affinity purified.

Formulation

PBS with 0.1% sodium azide and 50% glycerol pH 7.3.

Storage

Store at -20°C. DO NOT ALIQUOT

Clonality

Polyclonal

Ig Type

Rabbit IgG

Applications

ELISA, IHC, WB

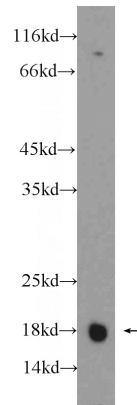
Dilutions

Recommended Dilution:

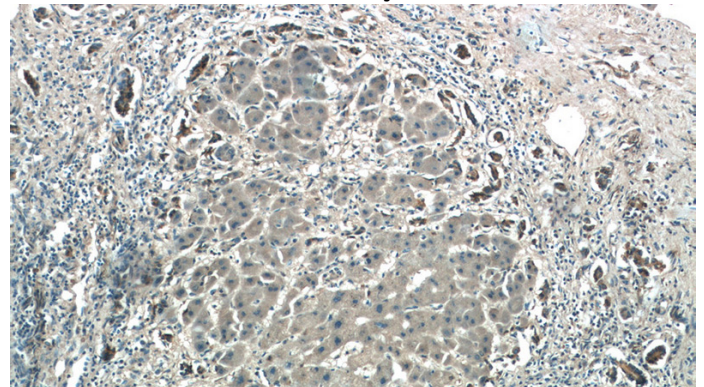
WB: 1:200-1:1000

IHC: 1:20-1:200

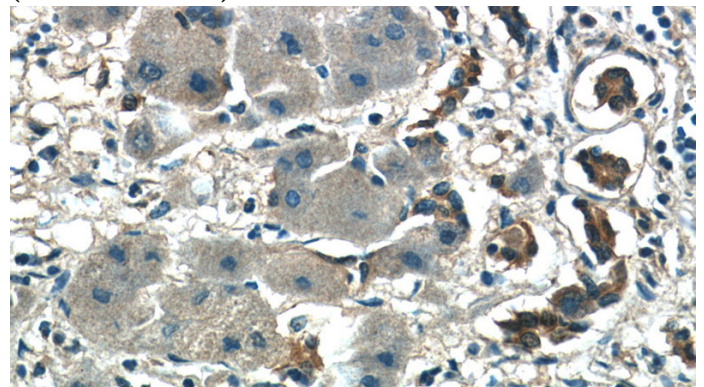
Validations



mouse skeletal muscle tissue were subjected to SDS PAGE followed by western blot with Catalog No:108830(CALM2 Antibody) at dilution of 1:300



Immunohistochemistry of paraffin-embedded human hepatocirrhosis tissue slide using Catalog No:108830(CALM2 Antibody) at dilution of 1:50 (under 10x lens)



Immunohistochemistry of paraffin-embedded human hepatocirrhosis tissue slide using Catalog No:108830(CALM2 Antibody) at dilution of 1:50

Calmodulin antibody



Catalog Number: 108830

(under 40x lens)