

CALHM1 antibody



Catalog Number: 108822

Product name

CALHM1 antibody

IHC: 1:20-1:200

Specificity

Human, Mouse, Rat; other species not tested.

Antibody description

CALHM1 Rabbit Polyclonal antibody. Positive IHC detected in human brain tissue. Positive WB detected in mouse brain tissue, rat brain tissue. Observed molecular weight by Western-blot: 38-40 kDa

Preparation

This antibody was obtained by immunization of CALHM1 recombinant protein (Accession Number: NM_001001412). Purification method: Antigen affinity purified.

Formulation

PBS with 0.02% sodium azide and 50% glycerol pH 7.3.

Storage

Store at -20°C. DO NOT ALIQUOT

Clonality

Polyclonal

Ig Type

Rabbit IgG

Applications

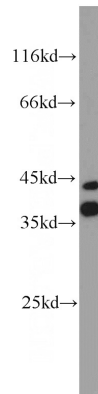
ELISA, WB, IHC

Dilutions

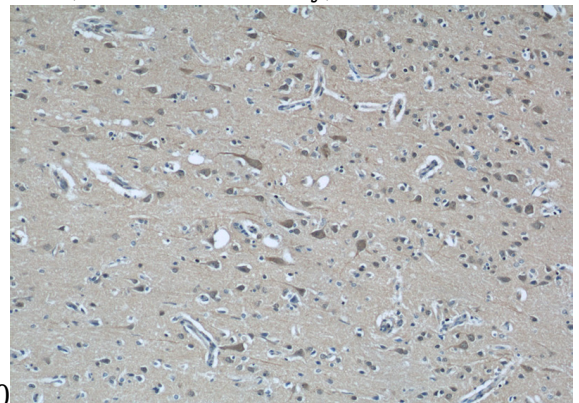
Recommended Dilution:

WB: 1:500-1:5000

Validations

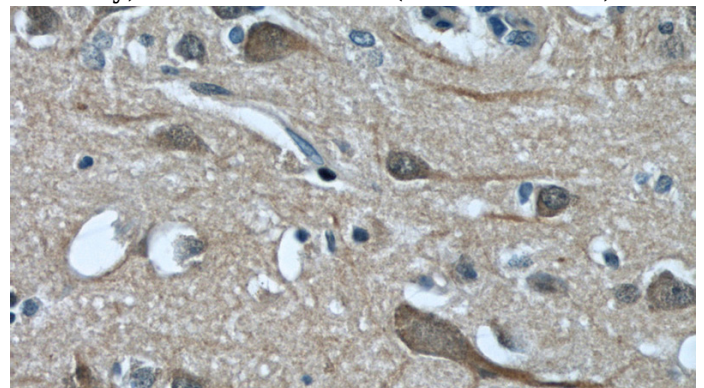


mouse brain tissue were subjected to SDS PAGE followed by western blot with Catalog No:108822(CALHM1 antibody) at dilution of



1:1000

Immunohistochemical of paraffin-embedded human brain using Catalog No:108822(CALHM1 antibody) at dilution of 1:50 (under 10x lens)



Immunohistochemical of paraffin-embedded human brain using Catalog No:108822(CALHM1 antibody) at dilution of 1:50 (under 40x lens)