

Calcium Sensing Receptor antibody



Catalog Number: 108816

Product name

Calcium Sensing Receptor antibody

Specificity

Human, Mouse, Rat; other species not tested.

Antibody description

Calcium Sensing Receptor Rabbit Polyclonal antibody. Positive IF detected in Hela cells. Positive WB detected in HL-60 cells, Jurkat cells. Observed molecular weight by Western-blot: 60-65 kDa

Preparation

This antibody was obtained by immunization of Peptide (Accession Number: NM_000388). Purification method: Antigen affinity purified.

Formulation

PBS with 0.02% sodium azide and 50% glycerol pH 7.3.

Storage

Store at -20°C. DO NOT ALIQUOT

Clonality

Polyclonal

Ig Type

Rabbit IgG

Applications

ELISA, WB, IF

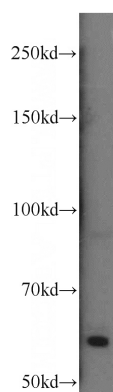
Dilutions

Recommended Dilution:

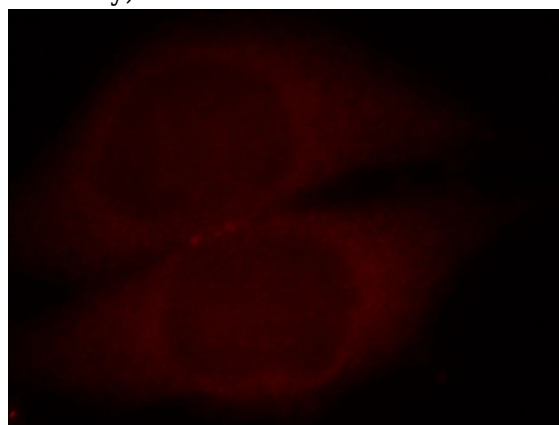
WB: 1:500-1:5000

IF: 1:10-1:100

Validations



HL-60 cells were subjected to SDS PAGE followed by western blot with Catalog No:108816(CASR antibody) at dilution of 1:400



Immunofluorescent analysis of Hela cells, using CASR antibody Catalog No:108816 at 1:25 dilution and Rhodamine-labeled goat anti-rabbit IgG (red).