

# C7orf58 antibody

Catalog Number: 108792

## Product name

C7orf58 antibody

IHC: 1:20-1:200

IF: 1:20-1:200

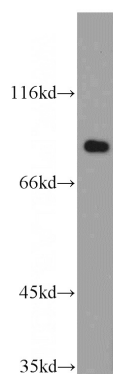
## Specificity

Human; other species not tested.

## Validations

## Antibody description

C7orf58 Rabbit Polyclonal antibody. Positive IF detected in A375 cells. Positive IHC detected in human stomach tissue. Positive WB detected in A375 cells, A431 cells, HEK-293 cells, HeLa cells, L02 cells. Observed molecular weight by Western-blot: 89 kDa



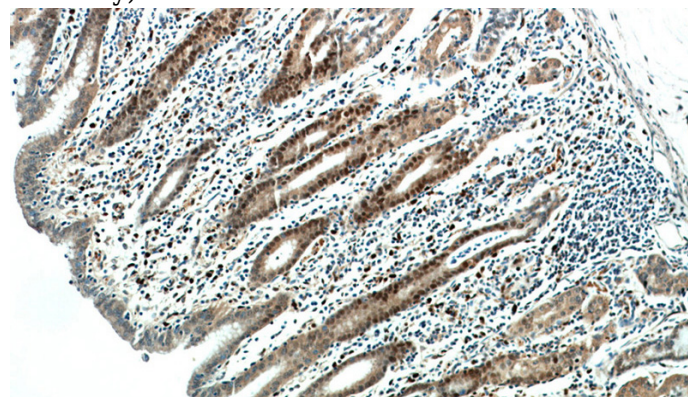
## Preparation

This antibody was obtained by immunization of C7orf58 recombinant protein (Accession Number: BC030538). Purification method: Antigen affinity purified.

A375 cells were subjected to SDS PAGE followed by western blot with Catalog No:108792(C7orf58 antibody) at dilution of 1:500

## Formulation

PBS with 0.02% sodium azide and 50% glycerol pH 7.3.



## Storage

Store at -20°C. DO NOT ALIQUOT

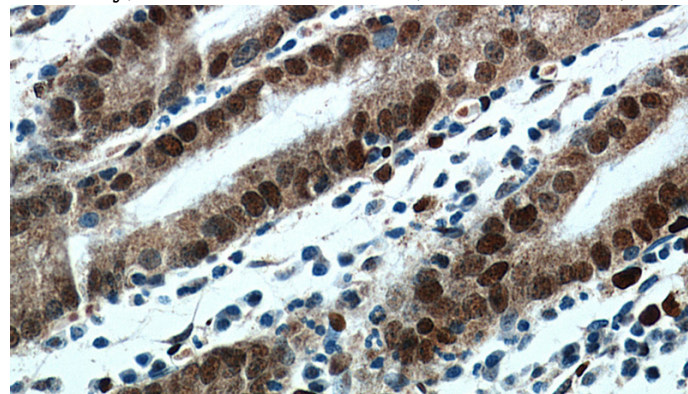
## Clonality

Polyclonal

Immunohistochemical of paraffin-embedded human stomach using Catalog No:108792(C7orf58 antibody) at dilution of 1:100 (under 10x lens)

## Ig Type

Rabbit IgG



## Applications

ELISA, WB, IHC, IF

## Dilutions

Recommended Dilution:

WB: 1:500-1:5000

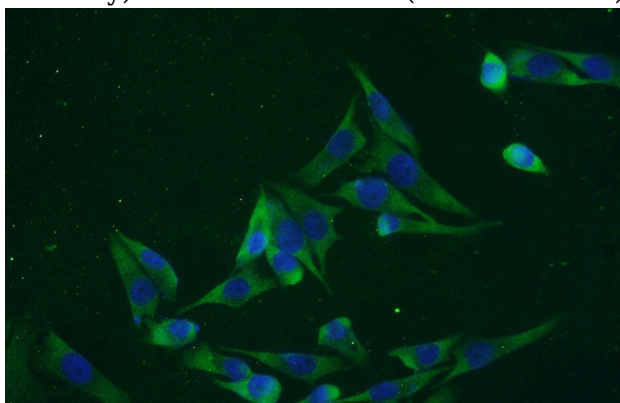
Immunohistochemical of paraffin-embedded human stomach using Catalog No:108792(C7orf58

# C7orf58 antibody

Catalog Number: 108792

---

antibody) at dilution of 1:100 (under 40x lens)



Immunofluorescent analysis of A375 cells using Catalog No:108792(C7orf58 Antibody) at dilution of 1:50 and Alexa Fluor 488-conjugated AffiniPure Goat Anti-Rabbit IgG(H+L)