

# C7orf50 antibody



Catalog Number: 108791

## Product name

C7orf50 antibody

## Specificity

human; other species not tested.

## Antibody description

C7orf50 Rabbit Polyclonal antibody. Positive WB detected in L02 cells. Observed molecular weight by Western-blot: 22kd

## Preparation

This antibody was obtained by immunization of C7orf50 recombinant protein (Accession Number: NM\_001134396). Purification method: Antigen affinity purified.

## Formulation

PBS with 0.02% sodium azide and 50% glycerol pH 7.3.

## Storage

Store at -20°C. DO NOT ALIQUOT

## Clonality

Polyclonal

## Ig Type

Rabbit IgG

## Applications

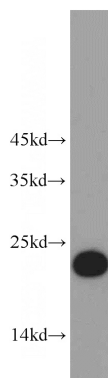
ELISA, WB

## Dilutions

Recommended Dilution:

WB: 1:200-1:2000

## Validations



L02 cells were subjected to SDS PAGE followed by western blot with Catalog No:108791(C7orf50 antibody) at dilution of 1:500