

C7orf10 antibody



Catalog Number: 108787

Product name

C7orf10 antibody

WB: 1:200-1:2000

IHC: 1:20-1:200

Specificity

Human, Mouse, Rat; other species not tested.

Antibody description

C7orf10 Rabbit Polyclonal antibody. Positive IHC detected in human kidney tissue, human pancreas tissue. Positive WB detected in mouse skeletal muscle tissue, HEK-293 cells, mouse pancreas tissue. Observed molecular weight by Western-blot: 48-55kd

Preparation

This antibody was obtained by immunization of C7orf10 recombinant protein (Accession Number: BC098318). Purification method: Antigen affinity purified.

Formulation

PBS with 0.02% sodium azide and 50% glycerol pH 7.3.

Storage

Store at -20°C. DO NOT ALIQUOT

Clonality

Polyclonal

Ig Type

Rabbit IgG

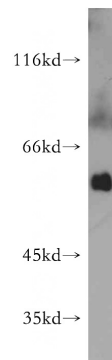
Applications

ELISA, WB, IHC

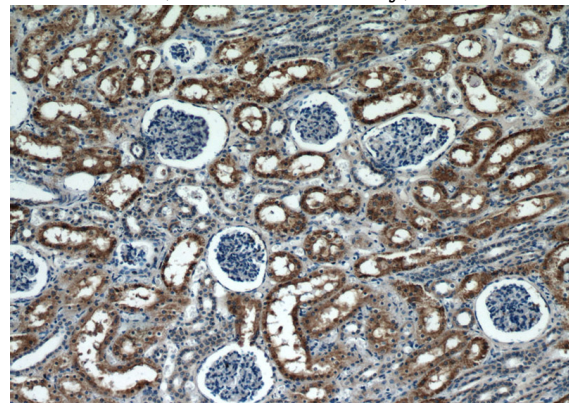
Dilutions

Recommended Dilution:

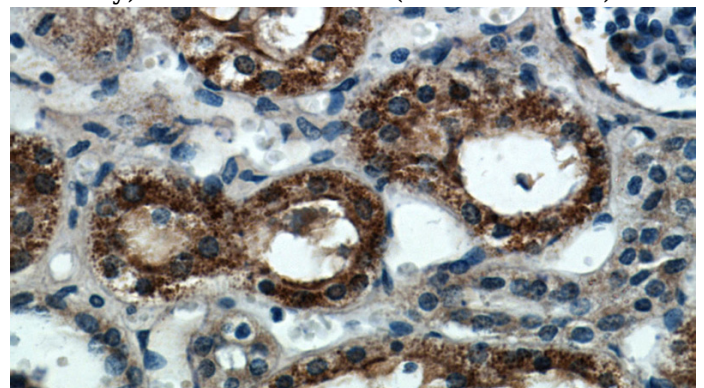
Validations



mouse skeletal muscle tissue were subjected to SDS PAGE followed by western blot with Catalog No:108787(C7orf10 antibody) at dilution of 1:500



Immunohistochemical of paraffin-embedded human kidney using Catalog No:108787(C7orf10 antibody) at dilution of 1:50 (under 10x lens)



Immunohistochemical of paraffin-embedded human kidney using Catalog No:108787(C7orf10 antibody) at dilution of 1:50 (under 40x lens)