

# C6orf211 antibody



Catalog Number: 108784

## Product name

C6orf211 antibody

IHC: 1:20-1:200

IF: 1:10-1:100

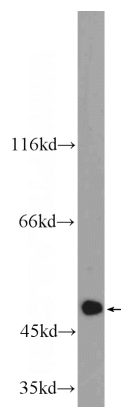
## Specificity

Human; other species not tested.

## Validations

## Antibody description

C6orf211 Rabbit Polyclonal antibody. Positive WB detected in MCF-7 cells, A431 cells, HEK-293 cells. Positive IF detected in MCF-7 cells. Positive IHC detected in human testis tissue, human breast cancer tissue. Observed molecular weight by Western-blot: 50-51 kDa



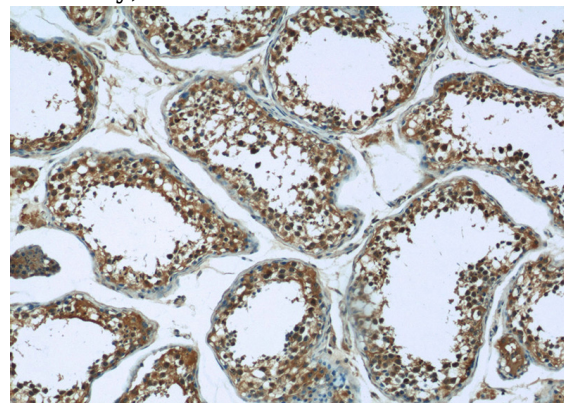
## Preparation

This antibody was obtained by immunization of C6orf211 recombinant protein (Accession Number: NM\_024573). Purification method: Antigen affinity purified.

MCF-7 cells were subjected to SDS PAGE followed by western blot with Catalog No:108784(C6orf211 Antibody) at dilution of 1:600

## Formulation

PBS with 0.1% sodium azide and 50% glycerol pH 7.3.



## Storage

Store at -20°C. DO NOT ALIQUOT

## Clonality

Polyclonal

Immunohistochemistry of paraffin-embedded human testis tissue slide using Catalog No:108784(C6orf211 Antibody) at dilution of 1:50 (under 10x lens)

## Ig Type

Rabbit IgG

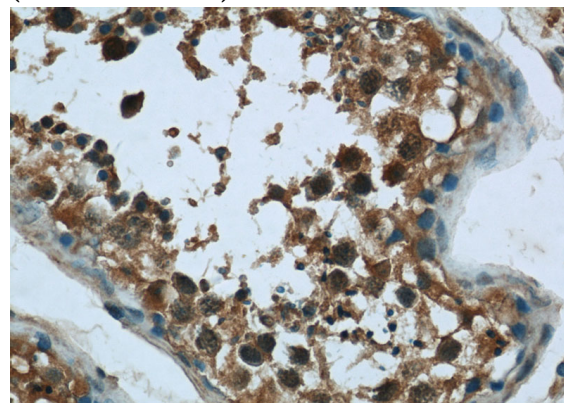
## Applications

ELISA, WB, IHC, IF

## Dilutions

Recommended Dilution:

WB: 1:200-1:2000



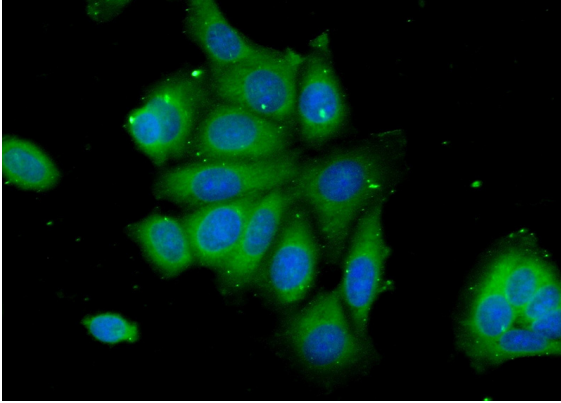
Immunohistochemistry of paraffin-embedded

# C6orf211 antibody

Catalog Number: 108784

---

human testis tissue slide using Catalog  
No:108784(C6orf211 Antibody) at dilution of 1:50  
(under 40x lens)



Immunofluorescent analysis of (-20oc Ethanol)  
fixed MCF-7 cells using Catalog  
No:108784(C6orf211 Antibody) at dilution of 1:25  
and Alexa Fluor 488-conjugated AffiniPure Goat  
Anti-Rabbit IgG(H+L)