

# C6orf15 antibody

Catalog Number: 108779

## Product name

C6orf15 antibody

IHC: 1:20-1:200

IF: 1:20-1:200

## Specificity

Human, Monkey; other species not tested.

## Antibody description

C6orf15 Rabbit Polyclonal antibody. Positive WB detected in PC-3 cells, COS-7 cells. Positive IHC detected in human skin tissue, human tonsillitis tissue. Positive IF detected in PC-3 cells. Observed molecular weight by Western-blot: 50-55 kDa

## Preparation

This antibody was obtained by immunization of C6orf15 recombinant protein (Accession Number: NM\_014070). Purification method: Antigen affinity purified.

## Formulation

PBS with 0.1% sodium azide and 50% glycerol pH 7.3.

## Storage

Store at -20°C. DO NOT ALIQUOT

## Clonality

Polyclonal

## Ig Type

Rabbit IgG

## Applications

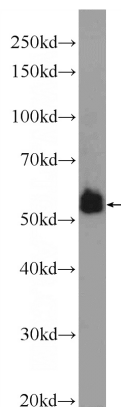
ELISA, WB, IHC, IF

## Dilutions

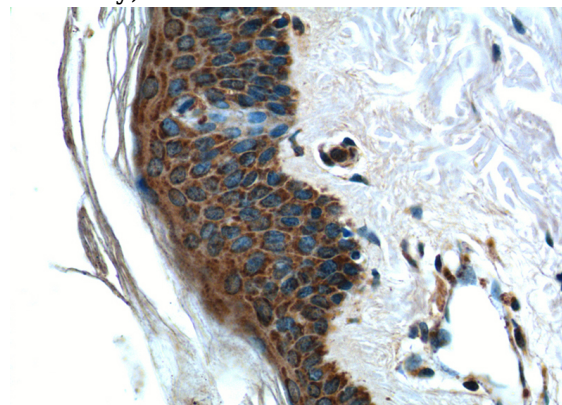
Recommended Dilution:

WB: 1:200-1:2000

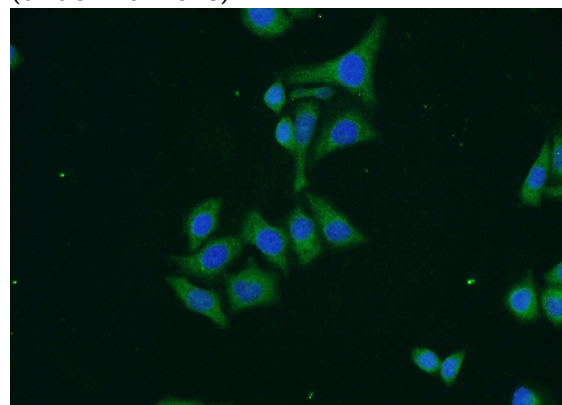
## Validations



PC-3 cells were subjected to SDS PAGE followed by western blot with Catalog No:108779(C6orf15 Antibody) at dilution of 1:600



Immunohistochemistry of paraffin-embedded human skin tissue slide using Catalog No:108779(C6orf15 Antibody) at dilution of 1:50 (under 40x lens)



Immunofluorescent analysis of PC-3 cells using

# C6orf15 antibody



Catalog Number: 108779

---

Catalog No:108779(C6orf15 Antibody) at dilution of 1:50 and Alexa Fluor 488-conjugated AffiniPure Goat Anti-Rabbit IgG(H+L)