

# CAD antibody



Catalog Number: 108771

## Product name

CAD antibody

IP: 1:200-1:2000

IF: 1:20-1:200

## Specificity

Human; other species not tested.

## Antibody description

CAD Rabbit Polyclonal antibody. Positive IP detected in HEK-293 cells. Positive WB detected in HEK-293 cells. Positive IF detected in HEK-293 cells. Observed molecular weight by Western-blot: 240 kDa

## Preparation

This antibody was obtained by immunization of CAD recombinant protein (Accession Number: BC014178). Purification method: Antigen affinity purified.

## Formulation

PBS with 0.1% sodium azide and 50% glycerol pH 7.3.

## Storage

Store at -20°C. DO NOT ALIQUOT

## Clonality

Polyclonal

## Ig Type

Rabbit IgG

## Applications

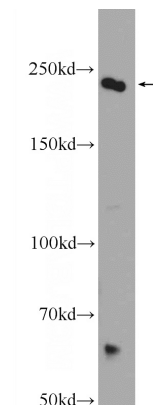
ELISA, WB, IP, IF

## Dilutions

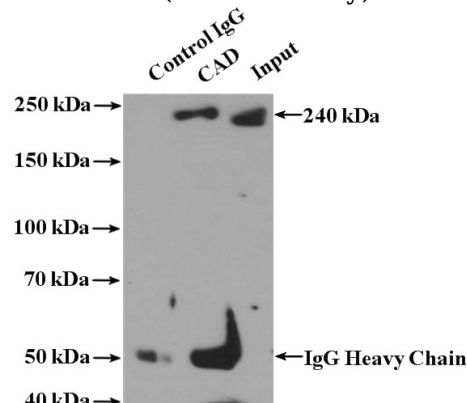
Recommended Dilution:

WB: 1:200-1:2000

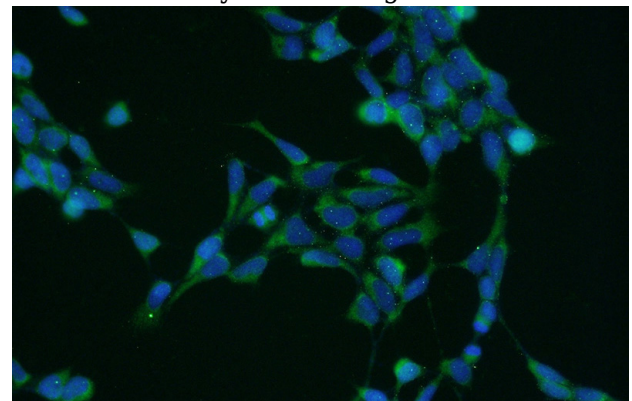
## Validations



HEK-293 cells were subjected to SDS PAGE followed by western blot with Catalog No:108771(CAD Antibody) at dilution of 1:600



IP Result of anti-CAD (IP:Catalog No:108771, 4ug; Detection:Catalog No:108771 1:500) with HEK-293 cells lysate 2800ug.



Immunofluorescent analysis of HEK-293 cells using Catalog No:108771(CAD Antibody) at

# CAD antibody



Catalog Number: 108771

---

dilution of 1:50 and Alexa Fluor 488-conjugated

AffiniPure Goat Anti-Rabbit IgG(H+L)