

CAB39L antibody



Catalog Number: 108753

Product name

CAB39L antibody

Specificity

Human, Mouse, Rat; other species not tested.

Antibody description

CAB39L Rabbit Polyclonal antibody. Positive WB detected in K-562 cells, HEK-293 cells, human spleen tissue. Positive IF detected in HepG2 cells. Observed molecular weight by Western-blot: 39kd

Preparation

This antibody was obtained by immunization of CAB39L recombinant protein (Accession Number: NM_001287339). Purification method: Antigen affinity purified.

Formulation

PBS with 0.02% sodium azide and 50% glycerol pH 7.3.

Storage

Store at -20°C. DO NOT ALIQUOT

Clonality

Polyclonal

Ig Type

Rabbit IgG

Applications

ELISA, WB, IF

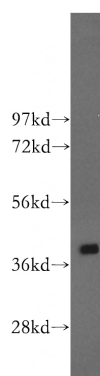
Dilutions

Recommended Dilution:

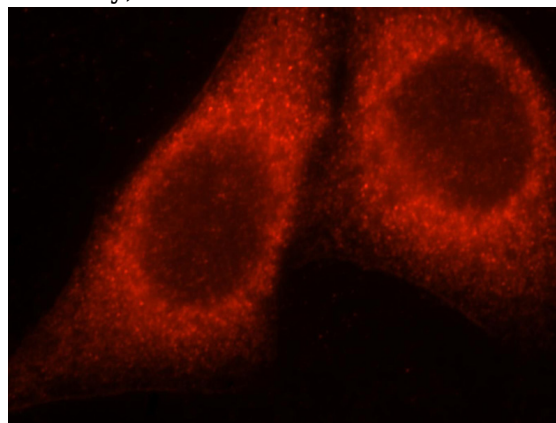
WB: 1:500-1:5000

IF: 1:10-1:100

Validations



K-562 cells were subjected to SDS PAGE followed by western blot with Catalog No:108753(CAB39L antibody) at dilution of 1:400



Immunofluorescent analysis of HepG2 cells, using CAB39L antibody Catalog No:108753 at 1:25 dilution and Rhodamine-labeled goat anti-rabbit IgG (red).