

# CA3 antibody

Catalog Number: 108748

## Product name

CA3 antibody

## Specificity

Human, Mouse, Rat; other species not tested.

## Antibody description

CA3 Rabbit Polyclonal antibody. Positive WB detected in HeLa cells, HEK-293 cells, mouse skeletal muscle tissue. Positive IHC detected in human skeletal muscle tissue, mouse skeletal muscle tissue, rat skeletal muscle tissue. Observed molecular weight by Western-blot: 30 kDa

## Preparation

This antibody was obtained by immunization of CA3 recombinant protein (Accession Number: NM\_005181). Purification method: Antigen affinity purified.

## Formulation

PBS with 0.02% sodium azide and 50% glycerol pH 7.3.

## Storage

Store at -20°C. DO NOT ALIQUOT

## Clonality

Polyclonal

## Ig Type

Rabbit IgG

## Applications

ELISA, WB, IHC

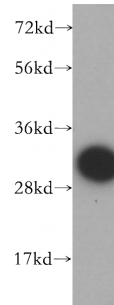
## Dilutions

Recommended Dilution:

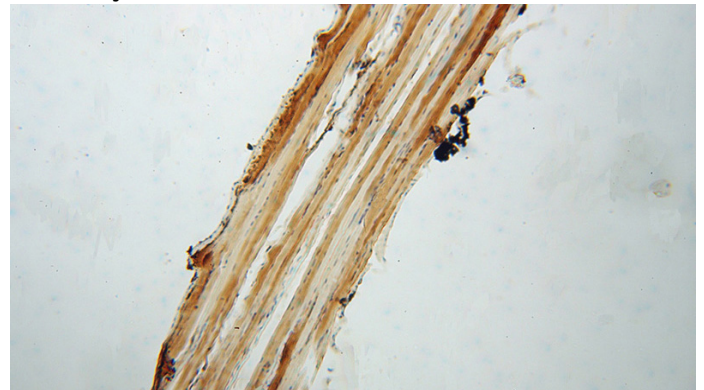
WB: 1:1000-1:10000

IHC: 1:20-1:200

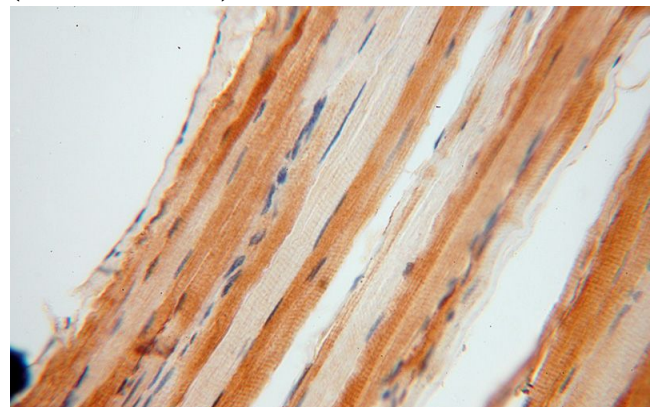
## Validations



HeLa cells were subjected to SDS PAGE followed by western blot with Catalog No:108748(CA3 antibody) at dilution of 1:500



Immunohistochemical of paraffin-embedded human skeletal muscle using Catalog No:108748(CA3 antibody) at dilution of 1:100 (under 10x lens)



Immunohistochemical of paraffin-embedded human skeletal muscle using Catalog No:108748(CA3 antibody) at dilution of 1:100

# CA3 antibody



Catalog Number: 108748

---

(under 40x lens)