

# CA2 antibody



Catalog Number: 108747

## Product name

CA2 antibody

## Specificity

Human, Mouse, Rat; other species not tested.

## Antibody description

CA2 Rabbit Polyclonal antibody. Positive IP detected in mouse kidney tissue. Positive WB detected in mouse ovary tissue, human stomach tissue, rat kidney tissue. Observed molecular weight by Western-blot: 29 kDa

## Preparation

This antibody was obtained by immunization of CA2 recombinant protein (Accession Number: NM\_000067). Purification method: Antigen affinity purified.

## Formulation

PBS with 0.02% sodium azide and 50% glycerol pH 7.3.

## Storage

Store at -20°C. DO NOT ALIQUOT

## Clonality

Polyclonal

## Ig Type

Rabbit IgG

## Applications

ELISA, WB, IP

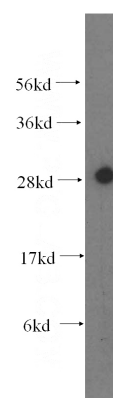
## Dilutions

Recommended Dilution:

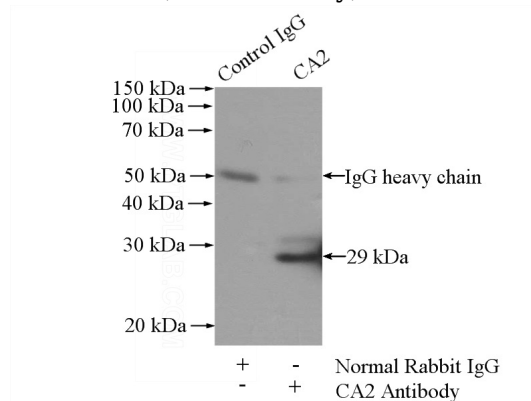
WB: 1:500-1:5000

IP: 1:200-1:2000

## Validations



mouse ovary tissue were subjected to SDS PAGE followed by western blot with Catalog No:108747(CA2 antibody) at dilution of 1:500



IP Result of anti-CA2 (IP:Catalog No:108747, 4ug; Detection:Catalog No:108747 1:500) with mouse kidney tissue lysate 4000ug.