

CA12 antibody



Catalog Number: 108744

Product name

CA12 antibody

IHC: 1:20-1:200

Specificity

Human, Mouse, Rat; other species not tested.

Antibody description

CA12 Rabbit Polyclonal antibody. Positive WB detected in BxPC-3 cells, C6 cells, HEK-293 cells, PC-3 cells. Positive FC detected in HEK-293 cells. Positive IHC detected in human kidney tissue. Observed molecular weight by Western-blot: 44kd, 75-80kd

Preparation

This antibody was obtained by immunization of CA12 recombinant protein (Accession Number: NM_206925). Purification method: Antigen affinity purified.

Formulation

PBS with 0.02% sodium azide and 50% glycerol pH 7.3.

Storage

Store at -20°C. DO NOT ALIQUOT

Clonality

Polyclonal

Ig Type

Rabbit IgG

Applications

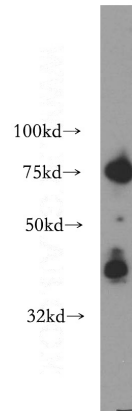
ELISA, WB, IHC, FC

Dilutions

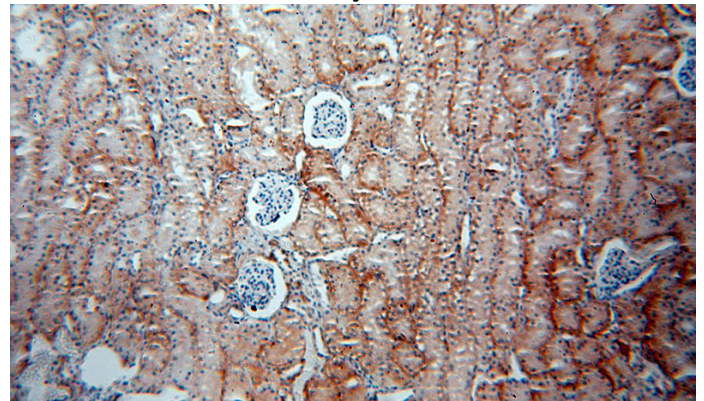
Recommended Dilution:

WB: 1:200-1:2000

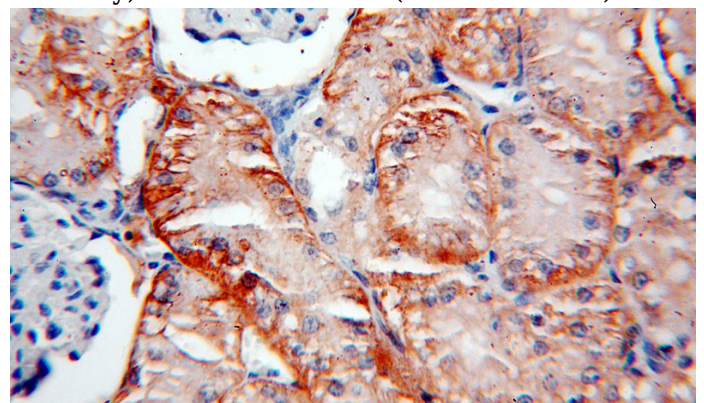
Validations



BxPC-3 cells were subjected to SDS PAGE followed by western blot with Catalog No:108744(CA12 antibody) at dilution of 1:300



Immunohistochemical of paraffin-embedded human kidney using Catalog No:108744(CA12 antibody) at dilution of 1:50 (under 10x lens)

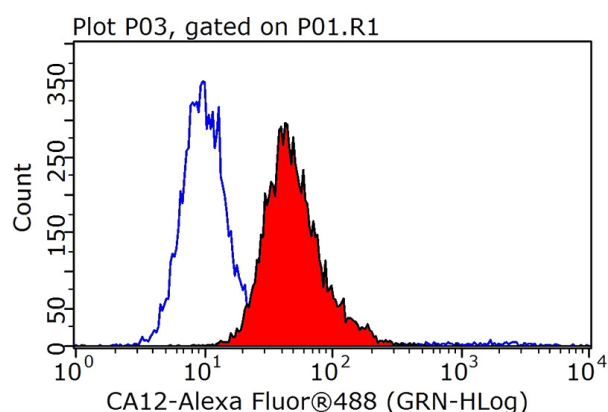


Immunohistochemical of paraffin-embedded human kidney using Catalog No:108744(CA12 antibody) at dilution of 1:50 (under 40x lens)

CA12 antibody



Catalog Number: 108744



1X10⁶ HEK-293 cells were stained with 0.2ug CA12 antibody (Catalog No:108744, red) and control antibody (blue). Fixed with 90% MeOH blocked with 3% BSA (30 min). Alexa Fluor 488-conjugated AffiniPure Goat Anti-Rabbit IgG(H+L) with dilution 1:1000.