

C6 antibody

Catalog Number: 108739

Product name

C6 antibody

IP: 1:200-1:2000

IHC: 1:20-1:200

Specificity

Human, Mouse, Rat; other species not tested.

Antibody description

C6 Rabbit Polyclonal antibody. Positive IP detected in human plasma tissue. Positive WB detected in human blood tissue. Positive IHC detected in human liver cancer tissue. Observed molecular weight by Western-blot: 105 kDa

Preparation

This antibody was obtained by immunization of C6 recombinant protein (Accession Number: NM_001115131). Purification method: Antigen affinity purified.

Formulation

PBS with 0.1% sodium azide and 50% glycerol pH 7.3.

Storage

Store at -20°C. DO NOT ALIQUOT

Clonality

Polyclonal

Ig Type

Rabbit IgG

Applications

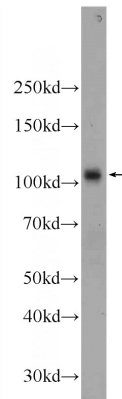
ELISA, WB, IHC, IP

Dilutions

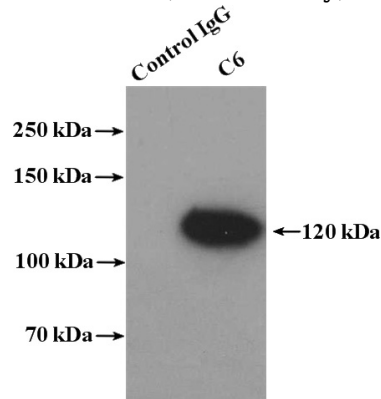
Recommended Dilution:

WB: 1:500-1:5000

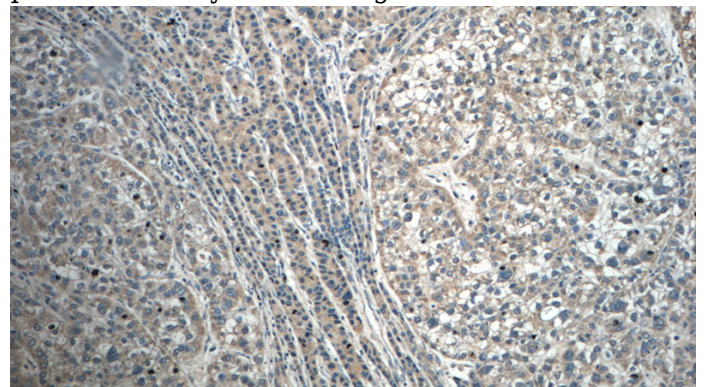
Validations



human blood tissue were subjected to SDS PAGE followed by western blot with Catalog No:108739(C6 Antibody) at dilution of 1:1000



IP Result of anti-C6 (IP:Catalog No:108739, 4ug; Detection:Catalog No:108739 1:800) with human plasma tissue lysate 4000ug.

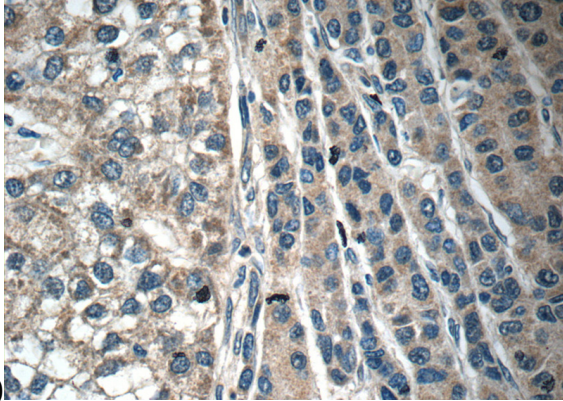


Immunohistochemistry of paraffin-embedded human liver cancer tissue slide using Catalog

C6 antibody

Catalog Number: 108739

No:108739(C6 Antibody) at dilution of 1:50 (under



10x lens)

Immunohistochemistry of paraffin-embedded human liver cancer tissue slide using Catalog No:108739(C6 Antibody) at dilution of 1:50 (under 40x lens)