

C22orf46 antibody



Catalog Number: 108710

Product name

C22orf46 antibody

WB: 1:500-1:5000

IP: 1:200-1:2000

Specificity

Human, Mouse; other species not tested.

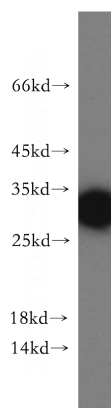
IHC: 1:20-1:200

IF: 1:20-1:200

Antibody description

C22orf46 Rabbit Polyclonal antibody. Positive WB detected in HepG2 cells, human brain tissue, L02 cells, mouse liver tissue. Positive IP detected in HepG2 cells. Positive IHC detected in human brain tissue, human testis tissue. Positive IF detected in HepG2 cells. Observed molecular weight by Western-blot: 28-30 kDa

Validations



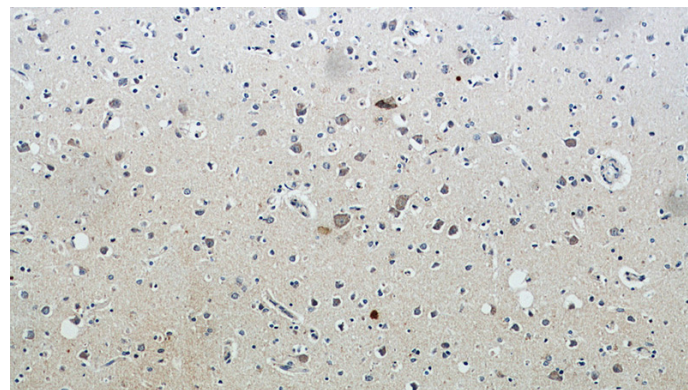
Preparation

This antibody was obtained by immunization of C22orf46 recombinant protein (Accession Number: NM_024588). Purification method: Antigen affinity purified.

HepG2 cells were subjected to SDS PAGE followed by western blot with Catalog No:108710(CTA-216E10.6 antibody) at dilution of 1:500

Formulation

PBS with 0.02% sodium azide and 50% glycerol pH 7.3.



Storage

Store at -20°C. DO NOT ALIQUOT

Clonality

Polyclonal

Ig Type

Rabbit IgG

Immunohistochemical of paraffin-embedded human brain using Catalog No:108710(CTA-216E10.6 antibody) at dilution of 1:100 (under 10x lens)

Applications

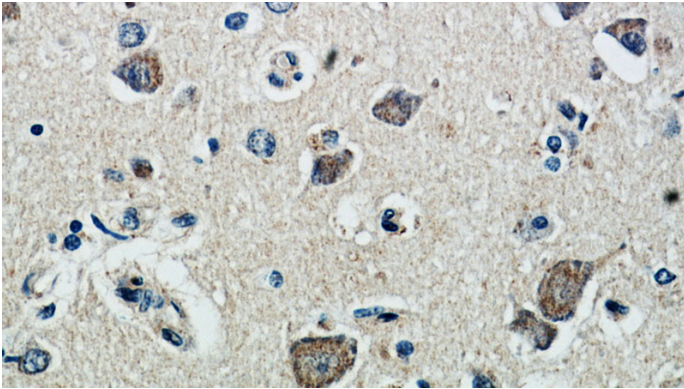
ELISA, WB, IHC, IF, IP

Dilutions

Recommended Dilution:

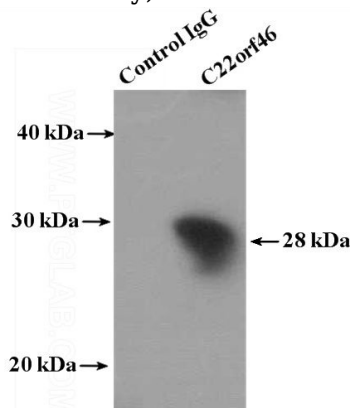
C22orf46 antibody

Catalog Number: 108710

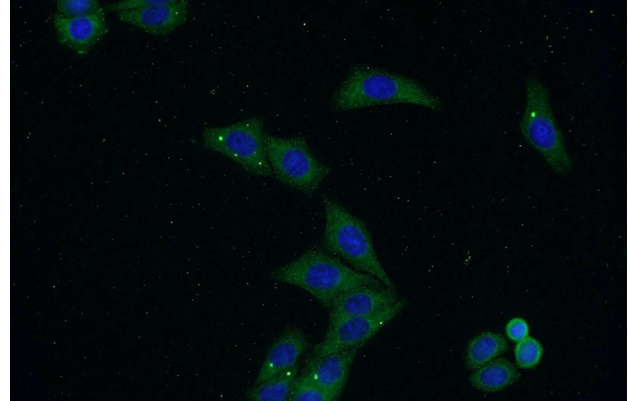


Immunohistochemical of paraffin-embedded human brain using Catalog No:108710(CTA-216E10.6 antibody) at dilution of

1:100 (under 40x lens)



IP Result of anti-CTA-216E10.6 (IP:Catalog No:108710, 4ug; Detection:Catalog No:108710 1:500) with HepG2 cells lysate 4000ug.



Immunofluorescent analysis of HepG2 cells using Catalog No:108710(CTA-216E10.6 Antibody) at dilution of 1:50 and Alexa Fluor 488-conjugated AffiniPure Goat Anti-Rabbit IgG(H+L)