

C20orf43 antibody



Catalog Number: 108703

Product name

C20orf43 antibody

Specificity

Human, Mouse, Rat; other species not tested.

Antibody description

C20orf43 Rabbit Polyclonal antibody. Positive IP detected in HeLa cells. Positive WB detected in HeLa cells, human brain tissue, human liver tissue, MCF7 cells. Observed molecular weight by Western-blot: 40 kDa

Preparation

This antibody was obtained by immunization of C20orf43 recombinant protein (Accession Number: NM_016407). Purification method: Antigen affinity purified.

Formulation

PBS with 0.02% sodium azide and 50% glycerol pH 7.3.

Storage

Store at -20°C. DO NOT ALIQUOT

Clonality

Polyclonal

Ig Type

Rabbit IgG

Applications

ELISA, WB, IP

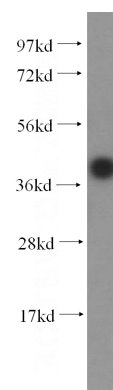
Dilutions

Recommended Dilution:

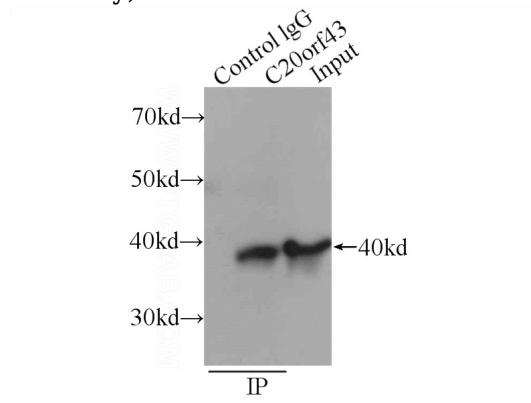
WB: 1:1000-1:10000

IP: 1:200-1:2000

Validations



HeLa cells were subjected to SDS PAGE followed by western blot with Catalog No:108703(C20orf43 antibody) at dilution of 1:500



IP Result of anti-C20orf43 (IP:Catalog No:108703, 3ug; Detection:Catalog No:108703 1:500) with HeLa cells lysate 3440ug.