

C20orf4 antibody



Catalog Number: 108702

Product name

C20orf4 antibody

Polyclonal

Ig Type

Rabbit IgG

Specificity

Human, Mouse, Rat; other species not tested.

Applications

ELISA, WB

Antibody description

C20orf4 Rabbit Polyclonal antibody. Positive WB detected in MCF-7 cells, HeLa cells, HepG2 cells. Observed molecular weight by Western-blot: 40-45 kDa

Dilutions

Recommended Dilution:

WB: 1:200-1:1000

Preparation

This antibody was obtained by immunization of C20orf4 recombinant protein (Accession Number: NM_015511). Purification method: Antigen affinity purified.

Formulation

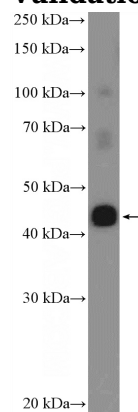
PBS with 0.1% sodium azide and 50% glycerol pH 7.3.

Storage

Store at -20°C. DO NOT ALIQUOT

Clonality

Validations



MCF-7 cells were subjected to SDS PAGE followed by western blot with Catalog No:108702(C20orf4 Antibody) at dilution of 1:300