

C20orf30 antibody

Catalog Number: 108701

Product name

C20orf30 antibody

Specificity

Human, Mouse, Rat; other species not tested.

Antibody description

C20orf30 Rabbit Polyclonal antibody. Positive WB detected in HepG2 cells, COLO 320 cells, HEK-293 cells, HeLa cells. Positive IHC detected in human colon cancer tissue, human liver cancer tissue, human pancreas tissue. Observed molecular weight by Western-blot: 13kd

Preparation

This antibody was obtained by immunization of C20orf30 recombinant protein (Accession Number: NM_001009924). Purification method: Antigen affinity purified.

Formulation

PBS with 0.02% sodium azide and 50% glycerol pH 7.3.

Storage

Store at -20°C. DO NOT ALIQUOT

Clonality

Polyclonal

Ig Type

Rabbit IgG

Applications

ELISA, WB, IHC

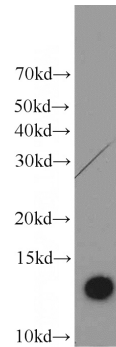
Dilutions

Recommended Dilution:

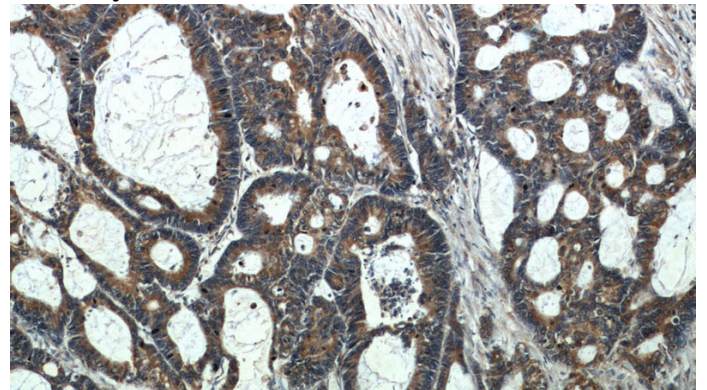
WB: 1:1000-1:10000

IHC: 1:20-1:200

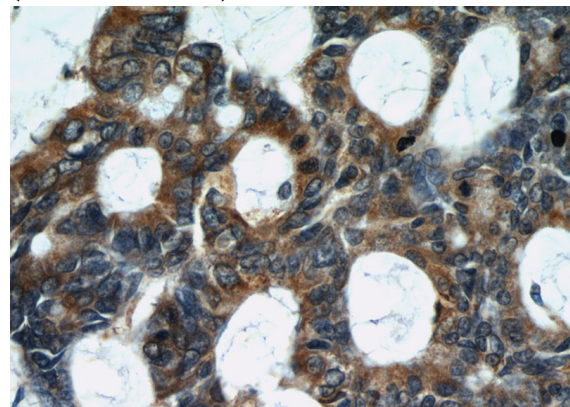
Validations



HepG2 cells were subjected to SDS PAGE followed by western blot with Catalog No:108701(C20orf30 antibody) at dilution of 1:1000



Immunohistochemical of paraffin-embedded human colon cancer using Catalog No:108701(C20orf30 antibody) at dilution of 1:50 (under 10x lens)



Immunohistochemical of paraffin-embedded human colon cancer using Catalog No:108701(C20orf30 antibody) at dilution of 1:50

C2orf30 antibody



Catalog Number: 108701

(under 40x lens)