

# C20orf3 antibody

Catalog Number: 108700

## Product name

C20orf3 antibody

IP: 1:200-1:1000

IHC: 1:50-1:500

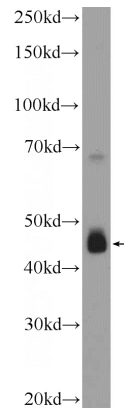
## Specificity

Human; other species not tested.

## Validations

## Antibody description

C20orf3 Rabbit Polyclonal antibody. Positive WB detected in HepG2 cells. Positive IP detected in mouse liver tissue. Positive IHC detected in human kidney tissue. Observed molecular weight by Western-blot: 46 kDa



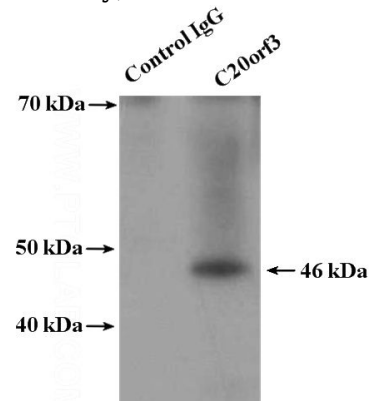
## Preparation

This antibody was obtained by immunization of C20orf3 recombinant protein (Accession Number: NM\_020531). Purification method: Antigen affinity purified.

HepG2 cells were subjected to SDS PAGE followed by western blot with Catalog No:108700(C20orf3 Antibody) at dilution of 1:600

## Formulation

PBS with 0.1% sodium azide and 50% glycerol pH 7.3.



## Storage

Store at -20°C. DO NOT ALIQUOT

## Clonality

Polyclonal

## Ig Type

Rabbit IgG

## Applications

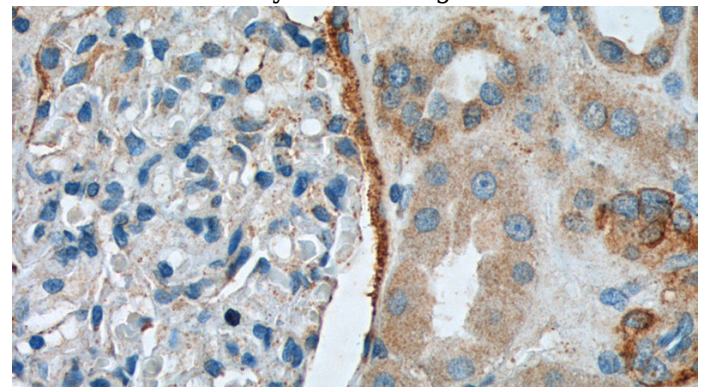
ELISA, WB, IHC, IP

## Dilutions

Recommended Dilution:

WB: 1:200-1:2000

IP Result of anti-C20orf3 (IP:Catalog No:108700, 4ug; Detection:Catalog No:108700 1:300) with mouse liver tissue lysate 4800ug.



Immunohistochemistry of paraffin-embedded human kidney tissue slide using Catalog

# C20orf3 antibody



Catalog Number: 108700

---

No:108700(C20orf3 Antibody) at dilution of 1:200 (under 40x lens).