

C1S antibody



Catalog Number: 108690

Product name

C1S antibody

Specificity

Human, Mouse, Rat; other species not tested.

Antibody description

C1S Rabbit Polyclonal antibody. Positive IHC detected in human liver cancer tissue. Positive WB detected in human blood tissue, COLO 320 cells. Observed molecular weight by Western-blot: 88 kDa

Preparation

This antibody was obtained by immunization of C1S recombinant protein (Accession Number: XM_005253760). Purification method: Antigen affinity purified.

Formulation

PBS with 0.02% sodium azide and 50% glycerol pH 7.3.

Storage

Store at -20°C. DO NOT ALIQUOT

Clonality

Polyclonal

Ig Type

Rabbit IgG

Applications

ELISA, WB, IHC

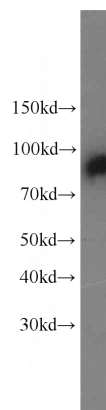
Dilutions

Recommended Dilution:

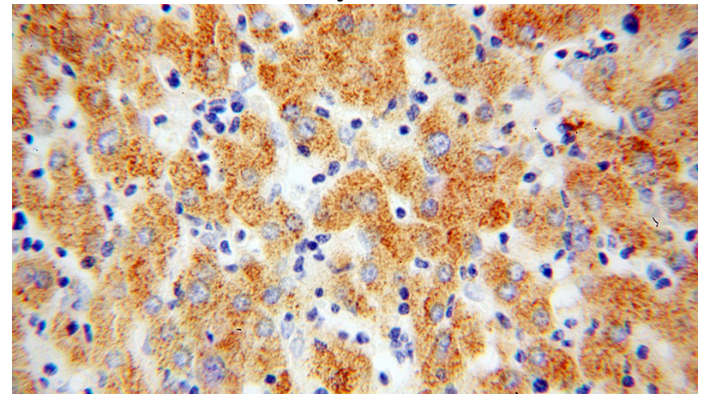
WB: 1:1000-1:10000

IHC: 1:20-1:200

Validations



human blood tissue were subjected to SDS PAGE followed by western blot with Catalog No:108690(C1S antibody) at dilution of 1:2000



Immunohistochemical of paraffin-embedded human liver cancer using Catalog No:108690(C1S antibody) at dilution of 1:50 (under 40x lens)