

# C1orf92 antibody

Catalog Number: 108684

## Product name

C1orf92 antibody

## Specificity

Human; other species not tested.

## Antibody description

C1orf92 Rabbit Polyclonal antibody. Positive IF detected in HeLa cells. Positive WB detected in HeLa cells. Observed molecular weight by Western-blot: 62 kDa

## Preparation

This antibody was obtained by immunization of C1orf92 recombinant protein (Accession Number: NM\_144702). Purification method: Antigen affinity purified.

## Formulation

PBS with 0.1% sodium azide and 50% glycerol pH 7.3.

## Storage

Store at -20°C. DO NOT ALIQUOT

## Clonality

Polyclonal

## Ig Type

Rabbit IgG

## Applications

ELISA, WB, IF

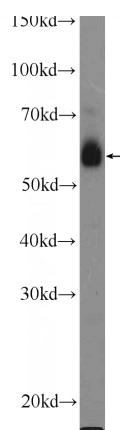
## Dilutions

Recommended Dilution:

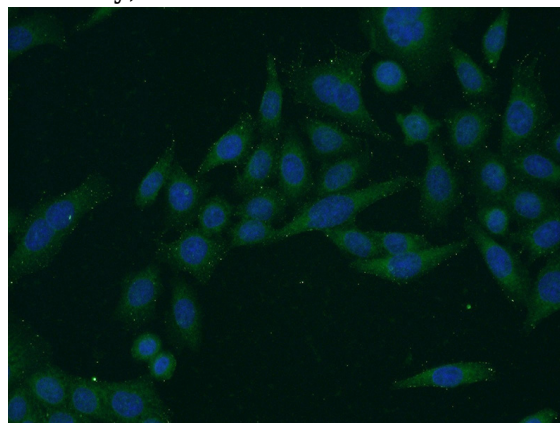
WB: 1:200-1:1000

IF: 1:20-1:200

## Validations



HeLa cells were subjected to SDS PAGE followed by western blot with Catalog No:108684(C1orf92 Antibody) at dilution of 1:300



Immunofluorescent analysis of HeLa cells using Catalog No:108684(C1orf92 Antibody) at dilution of 1:50 and Alexa Fluor 488-conjugated AffiniPure Goat Anti-Rabbit IgG(H+L)