

C1orf50 antibody



Catalog Number: 108678

Product name

C1orf50 antibody

Specificity

human, mouse; other species not tested.

Antibody description

C1orf50 Rabbit Polyclonal antibody. Positive IHC detected in human kidney. Positive WB detected in HEK-293 cells, human testis tissue. Observed molecular weight by Western-blot: 26kd

Preparation

This antibody was obtained by immunization of C1orf50 recombinant protein (Accession Number: NM_024097). Purification method: Antigen affinity purified.

Formulation

PBS with 0.02% sodium azide and 50% glycerol pH 7.3.

Storage

Store at -20°C. DO NOT ALIQUOT

Clonality

Polyclonal

Ig Type

Rabbit IgG

Applications

ELISA, WB, IHC

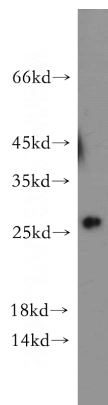
Dilutions

Recommended Dilution:

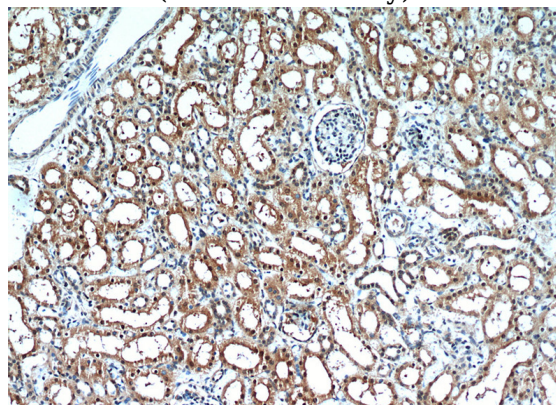
WB: 1:200-1:2000

IHC: 1:20-1:200

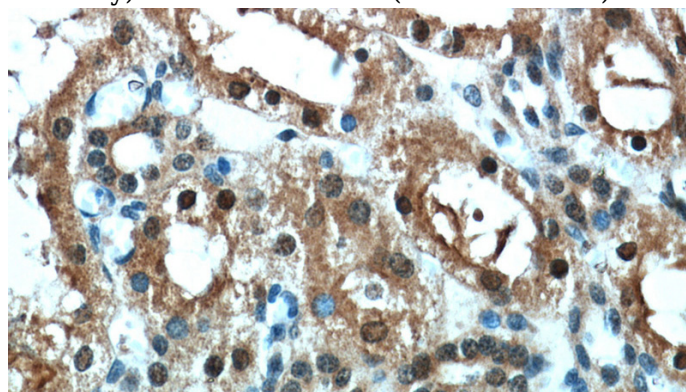
Validations



HEK-293 cells were subjected to SDS PAGE followed by western blot with Catalog No:108678(C1orf50 antibody) at dilution of 1:300



Immunohistochemical of paraffin-embedded human kidney using Catalog No:108678(C1orf50 antibody) at dilution of 1:50 (under 10x lens)



Immunohistochemical of paraffin-embedded human kidney using Catalog No:108678(C1orf50 antibody) at dilution of 1:50 (under 40x lens)