

C14orf28 antibody

Catalog Number: 108663

Product name

C14orf28 antibody

IP: 1:200-1:1000

IF: 1:50-1:500

Specificity

Human; other species not tested.

Antibody description

C14orf28 Rabbit Polyclonal antibody. Positive IF detected in HeLa cells. Positive WB detected in HeLa cells. Positive IP detected in HeLa cells. Observed molecular weight by Western-blot: 35-40 kDa

Preparation

This antibody was obtained by immunization of C14orf28 recombinant protein (Accession Number: NM_001017923). Purification method: Antigen affinity purified.

Formulation

PBS with 0.1% sodium azide and 50% glycerol pH 7.3.

Storage

Store at -20°C. DO NOT ALIQUOT

Clonality

Polyclonal

Ig Type

Rabbit IgG

Applications

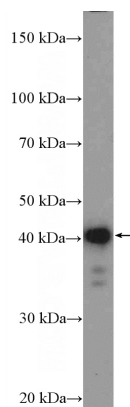
ELISA, WB, IP, IF

Dilutions

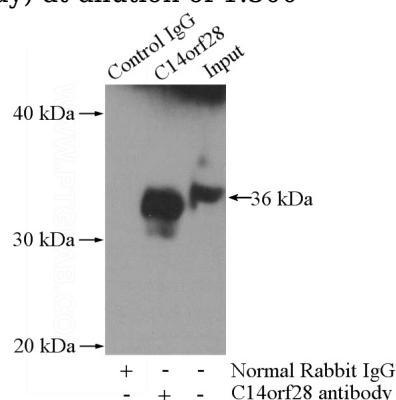
Recommended Dilution:

WB: 1:200-1:1000

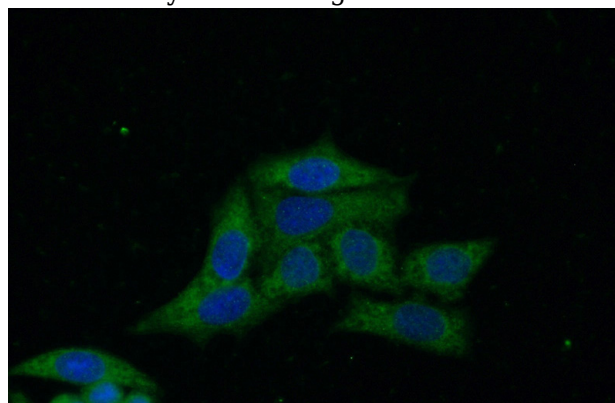
Validations



HeLa cells were subjected to SDS PAGE followed by western blot with Catalog No:108663(C14orf28 Antibody) at dilution of 1:300



IP Result of anti-C14orf28 (IP:Catalog No:108663, 4ug; Detection:Catalog No:108663 1:300) with HeLa cells lysate 1200ug.



Immunofluorescent analysis of (-20oc Ethanol) fixed HeLa cells using Catalog No:108663(C14orf28 Antibody)

C14orf28 antibody



Catalog Number: 108663

No:108663(C14orf28 Antibody) at dilution of 1:50 and Alexa Fluor 488-conjugated AffiniPure Goat Anti-Rabbit IgG(H+L)