

# C14orf102 antibody



Catalog Number: 108656

## Product name

C14orf102 antibody

## Immunogen

[Human C14orf102 Recombinant protein \(His tag\)](#)

## Specificity

Human; other species not tested.

## Antibody description

C14orf102 Rabbit Polyclonal antibody. Positive IP detected in MCF-7 cells. Positive WB detected in MCF-7 cells. Observed molecular weight by Western-blot: 133 kDa

## Preparation

This antibody was obtained by immunization of C14orf102 recombinant protein (Accession Number: NM\_199043). Purification method: Antigen affinity purified.

## Formulation

PBS with 0.1% sodium azide and 50% glycerol pH 7.3.

## Storage

Store at -20°C. DO NOT ALIQUOT

## Clonality

Polyclonal

## Ig Type

Rabbit IgG

## Applications

ELISA, WB, IP

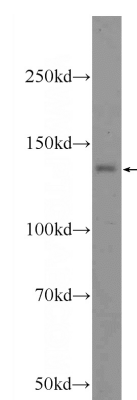
## Dilutions

Recommended Dilution:

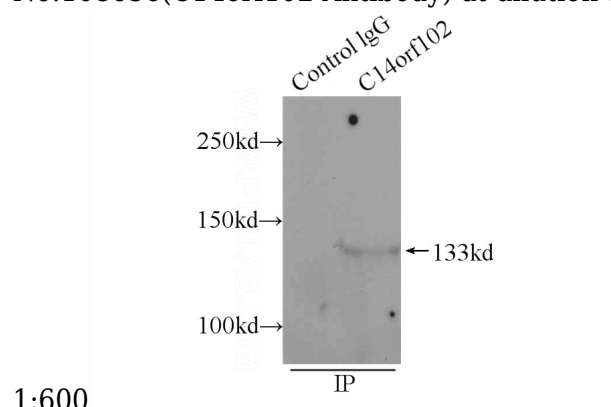
WB: 1:200-1:2000

IP: 1:200-1:2000

## Validations



MCF-7 cells were subjected to SDS PAGE followed by western blot with Catalog No:108656(C14orf102 Antibody) at dilution of



1:600

IP Result of anti-C14orf102 (IP:Catalog No:108656, 5ug; Detection:Catalog No:108656 1:500) with MCF-7 cells lysate 1200ug.