

# C1orf107 antibody



Catalog Number: 108632

## Product name

C1orf107 antibody

## Specificity

Human; other species not tested.

## Antibody description

C1orf107 Rabbit Polyclonal antibody. Positive WB detected in HepG2 cells. Positive IP detected in HepG2 cells. Observed molecular weight by Western-blot: 87-100 kDa

## Preparation

This antibody was obtained by immunization of C1orf107 recombinant protein (Accession Number: NM\_014388). Purification method: Antigen affinity purified.

## Formulation

PBS with 0.1% sodium azide and 50% glycerol pH 7.3.

## Storage

Store at -20°C. DO NOT ALIQUOT

## Clonality

Polyclonal

## Ig Type

Rabbit IgG

## Applications

ELISA, WB, IP

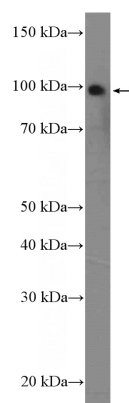
## Dilutions

Recommended Dilution:

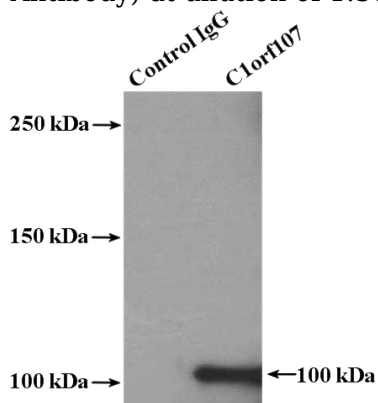
WB: 1:200-1:1000

IP: 1:200-1:1000

## Validations



HepG2 cells were subjected to SDS PAGE followed by western blot with Catalog No:108632(C1orf107 Antibody) at dilution of 1:300



IP Result of anti-C1orf107 (IP:Catalog No:108632, 4ug; Detection:Catalog No:108632 1:300) with HepG2 cells lysate 1000ug.