

C19orf61 antibody



Catalog Number: 108626

Product name

C19orf61 antibody

IP: 1:200-1:2000

IF: 1:20-1:200

Specificity

Human; other species not tested.

Antibody description

C19orf61 Rabbit Polyclonal antibody. Positive WB detected in HeLa cells. Positive IP detected in HeLa cells. Positive IF detected in HeLa cells. Observed molecular weight by Western-blot: 57-65 kDa

Preparation

This antibody was obtained by immunization of C19orf61 recombinant protein (Accession Number: NM_019108). Purification method: Antigen affinity purified.

Formulation

PBS with 0.1% sodium azide and 50% glycerol pH 7.3.

Storage

Store at -20°C. DO NOT ALIQUOT

Clonality

Polyclonal

Ig Type

Rabbit IgG

Applications

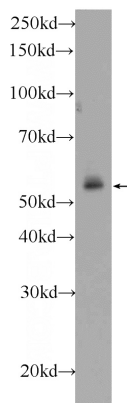
ELISA, WB, IP, IF

Dilutions

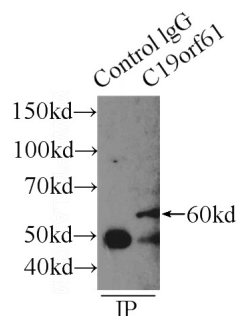
Recommended Dilution:

WB: 1:200-1:2000

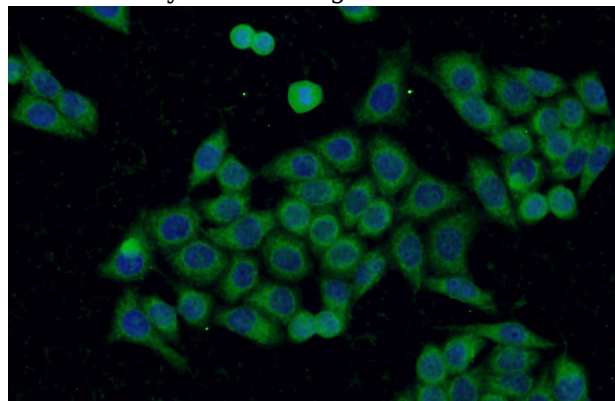
Validations



HeLa cells were subjected to SDS PAGE followed by western blot with Catalog No:108626(C19orf61 Antibody) at dilution of 1:600



IP Result of anti-C19orf61 (IP:Catalog No:108626, 3ug; Detection:Catalog No:108626 1:500) with HeLa cells lysate 2000ug.



Immunofluorescent analysis of HeLa cells using Catalog No:108626(C19orf61 Antibody) at dilution

C19orf61 antibody



Catalog Number: 108626

of 1:50 and Alexa Fluor 488-conjugated AffiniPure Goat Anti-Rabbit IgG(H+L)