

# C19orf20 antibody



Catalog Number: 108618

## Product name

Polyclonal

C19orf20 antibody

## Ig Type

## Specificity

Rabbit IgG

Human, Mouse; other species not tested.

## Applications

## Antibody description

ELISA, WB

C19orf20 Rabbit Polyclonal antibody. Positive WB detected in human plasma tissue, mouse heart tissue, mouse thymus tissue. Observed molecular weight by Western-blot: 29KD

## Dilutions

Recommended Dilution:

WB: 1:200-1:2000

## Preparation

This antibody was obtained by immunization of C19orf20 recombinant protein (Accession Number: BC009520). Purification method: Antigen affinity purified.

## Formulation

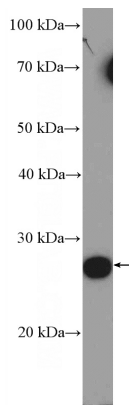
PBS with 0.1% sodium azide and 50% glycerol pH 7.3.

## Storage

Store at -20°C. DO NOT ALIQUOT

## Clonality

## Validations



human plasma tissue were subjected to SDS PAGE followed by western blot with Catalog No:108618(C19orf20 Antibody) at dilution of 1:600