

# C18orf55 antibody



Catalog Number: 108616

## Product name

C18orf55 antibody

## Specificity

Human; other species not tested.

## Antibody description

C18orf55 Rabbit Polyclonal antibody. Positive IHC detected in human liver tissue, human heart tissue, human kidney tissue, human ovary tissue, human spleen tissue.

## Preparation

This antibody was obtained by immunization of C18orf55 recombinant protein (Accession Number: NM\_014177). Purification method: Antigen affinity purified.

## Formulation

PBS with 0.02% sodium azide and 50% glycerol pH 7.3.

## Storage

Store at -20°C. DO NOT ALIQUOT

## Clonality

Polyclonal

## Ig Type

Rabbit IgG

## Applications

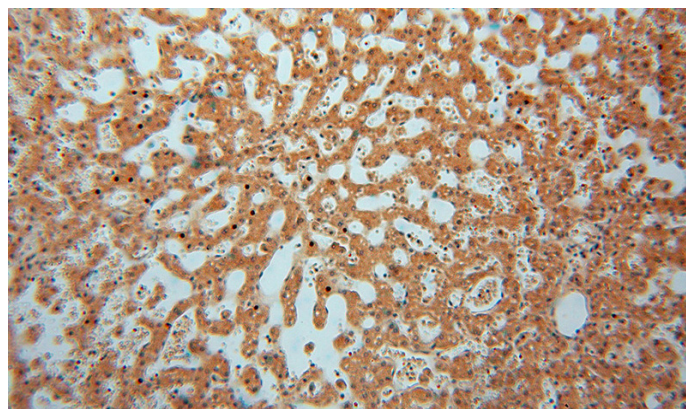
ELISA, IHC

## Dilutions

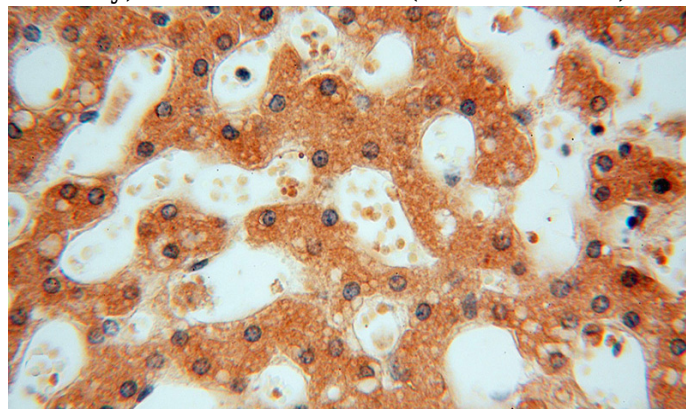
Recommended Dilution:

IHC: 1:20-1:200

## Validations



Immunohistochemical of paraffin-embedded human liver using Catalog No:108616(C18orf55 antibody) at dilution of 1:100 (under 10x lens)



Immunohistochemical of paraffin-embedded human liver using Catalog No:108616(C18orf55 antibody) at dilution of 1:100 (under 40x lens)