

# C16orf84 antibody

Catalog Number: 108610

## Product name

C16orf84 antibody

WB: 1:200-1:2000

IP: 1:200-1:2000

## Specificity

Human, Mouse; other species not tested.

IHC: 1:20-1:200

IF: 1:20-1:200

## Antibody description

C16orf84 Rabbit Polyclonal antibody. Positive IF detected in HEK-293 cells. Positive IHC detected in human testis tissue, human kidney tissue. Positive IP detected in HepG2 cells. Positive WB detected in HepG2 cells, mouse liver tissue, mouse spleen tissue, Raji cells. Observed molecular weight by Western-blot: 65-68 kDa

## Preparation

This antibody was obtained by immunization of C16orf84 recombinant protein (Accession Number: NM\_001012759). Purification method: Antigen affinity purified.

## Formulation

PBS with 0.02% sodium azide and 50% glycerol pH 7.3.

## Storage

Store at -20°C. DO NOT ALIQUOT

## Clonality

Polyclonal

## Ig Type

Rabbit IgG

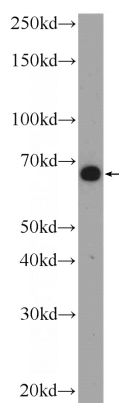
## Applications

ELISA, WB, IHC, IF, IP

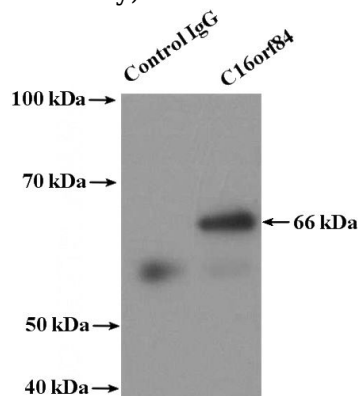
## Dilutions

Recommended Dilution:

## Validations



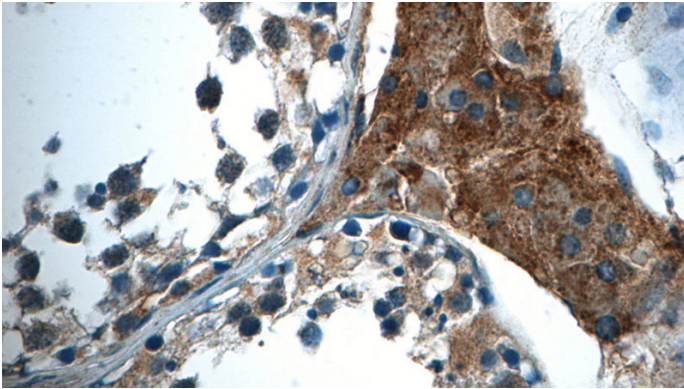
HepG2 cells were subjected to SDS PAGE followed by western blot with Catalog No:108610(C16orf84 Antibody) at dilution of 1:600



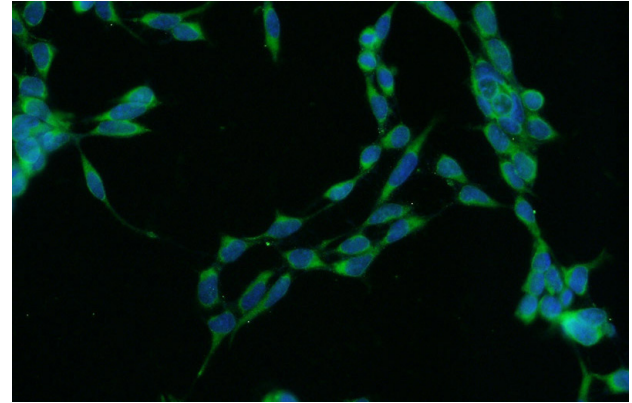
IP Result of anti-C16orf84 (IP:Catalog No:108610, 4ug; Detection:Catalog No:108610 1:500) with HepG2 cells lysate 3600ug.

# C16orf84 antibody

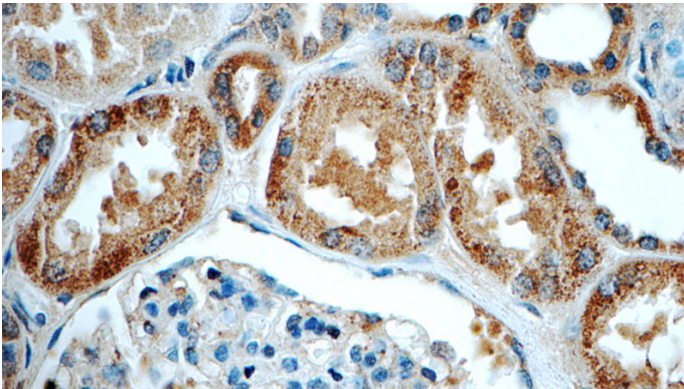
Catalog Number: 108610



Immunohistochemistry of paraffin-embedded human kidney tissue slide using Catalog No:108610(C16orf84 Antibody) at dilution of 1:50 (under 40x lens)



Immunohistochemistry of paraffin-embedded human testis tissue slide using Catalog No:108610(C16orf84 Antibody) at dilution of 1:50 (under 40x lens)



Immunofluorescent analysis of HEK-293 cells using Catalog No:108610(C16orf84 Antibody) at dilution of 1:50 and Alexa Fluor 488-conjugated AffiniPure Goat Anti-Rabbit IgG(H+L)