

BRP16 antibody



Catalog Number: 108596

Product name

BRP16 antibody

Specificity

Human, Mouse; other species not tested.

Antibody description

BRP16 Rabbit Polyclonal antibody. Positive IF detected in HepG2 cells. Positive WB detected in RAW 264.7 cells, HeLa cells, HepG2 cells, NIH/3T3 cells. Observed molecular weight by Western-blot: 42-45 kDa

Preparation

This antibody was obtained by immunization of BRP16 recombinant protein (Accession Number: NM_016458). Purification method: Antigen affinity purified.

Formulation

PBS with 0.1% sodium azide and 50% glycerol pH 7.3.

Storage

Store at -20°C. DO NOT ALIQUOT

Clonality

Polyclonal

Ig Type

Rabbit IgG

Applications

ELISA, WB, IF

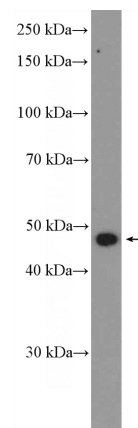
Dilutions

Recommended Dilution:

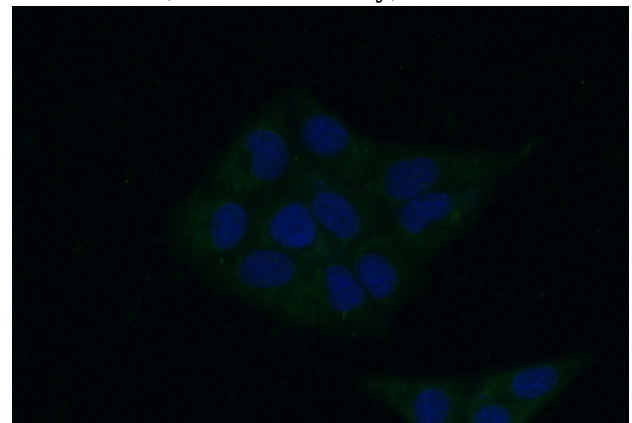
WB: 1:200-1:1000

IF: 1:50-1:500

Validations



RAW 264.7 cells were subjected to SDS PAGE followed by western blot with Catalog No:117243(BRP16 Antibody) at dilution of 1:300



Immunofluorescent analysis of (-20oc Ethanol) fixed HepG2 cells using Catalog No:117243(BRP16 Antibody) at dilution of 1:50 and Alexa Fluor 488-conjugated AffiniPure Goat Anti-Rabbit IgG(H+L)